

2015
INT VERSION

ENGINEERED PARTS
ACCESSORIES & APPAREL

POLARIS

POLARIS

ENGINEERED PARTS
ACCESSORIES & APPAREL



THE ART OF OPTIMIZED

OPTIMIZED TAKES MY RIDE TO A NEW LEVEL. OPTIMIZED BRINGS ME TO PLACES I'VE NEVER BEEN. OPTIMIZED MAKES MY RIDE AND MY GEAR FUNCTION AS ONE. EFFORTLESSLY. SEAMLESSLY. BEAUTIFULLY.

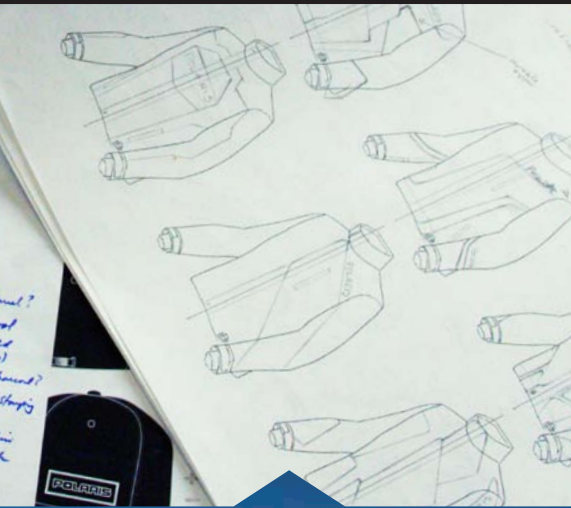


APPAREL

- 6 MEN'S UNINSULATED
- 8 MEN'S INSULATED
- 12 WOMEN'S INSULATED
- 14 HELMETS
- 18 GOGGLES & BALACLAVAS
- 20 GLOVES
- 22 BOOTS & BAGS
- 24 MEN'S LIFESTYLE
- 29 WOMEN'S LIFESTYLE
- 32 BEANIES & CAPS
- 34 YOUTH
- 37 PROTECTION
- 37 SIZING CHARTS

ACCESSORIES

- 44 STORAGE
- 51 SEATS
- 52 PROTECTION & STYLE
- 55 HANDLEBAR ACCESSORIES & MIRRORS
- 56 WRAPS
- 58 WIND PROTECTION
- 60 PERFORMANCE
- 62 POLARIS® INNOVATIONS
- 63 UTILITY
- 64 SKIS & TRACTION
- 68 TRACKS
- 69 BELTS
- 70 COVERS
- 72 OILS & LUBES



TRIAL BY SNOW

BEFORE YOU PUT IT ON YOUR BODY,
WE PUT IT THROUGH ITS PACES.

At Polaris®, a nimble team works tirelessly to engineer apparel for snowmobilers across the world. The Apparel Center of Excellence exists for a simple, but important reason: listen to our riders and make exactly what they need. **“Our inspiration comes from our riders and our vehicles,”** says Ryan, Apparel Product Developer. **“This is a company built by the people who ride.”** The team takes every opportunity to integrate gear and machines. Inspired by vehicle designs and rider needs, the designers tailor the gear to work seamlessly with the vehicles.

“We look so closely and pull so much from the look and feel of the sleds themselves,” says Jessie, Apparel Designer. “Whether it’s a pattern, angle, texture or color scheme, we make sure you and your sled look like a seamless unit.” From there, the Center of Excellence dials in on making gear as strong as it is sleek. Constant testing and refining ensures that the final product is ready to take on whatever Mother Nature throws at it.

“We always think of new ways to beat up a product and push it to its limits,” says Ryan. “We want to see what it takes to make it fail, so we can make it better.” The Center of Excellence continues to push the innovative thinking and rider-focused results that Polaris® has championed for over 60 years. Here, it’s understood that excellence is not given, gifted or handed down. Excellence is engineered.



LATITUDE: 40.189365 LONGITUDE: -111.269531



24°F (-4.4°C), WIND NW AT 7 MPH (11 KM/H), 95% HUMIDITY, TUESDAY 2:52 PM

OUTERWEAR



- A. Pro Jacket, Red, page 6
- B. Pro Bib, page 6
- C. FLY® F2 Helmet, SLY, page 16
- D. Sinister X5 Goggle, Burandt Edition, Matte Carbon, page 19
- E. Adventure Glove, page 20



TAKE IT TO THE HIGHEST PEAK. TAKE IT INTO THE DEEP POWDER. TAKE IT WHEREVER YOU WANT. POLARIS® UNINSULATED PRO GEAR IS ENGINEERED TO KEEP YOU WARM AND DRY ON ANY TERRAIN.

3M Scotchlite™ Reflective Material

New, purposeful reflector locations mean the utmost safety around every bend.

Controlled Venting

With zips from the bicep to the torso and on the back, adaptive custom comfort is yours.

YKK® Zippers

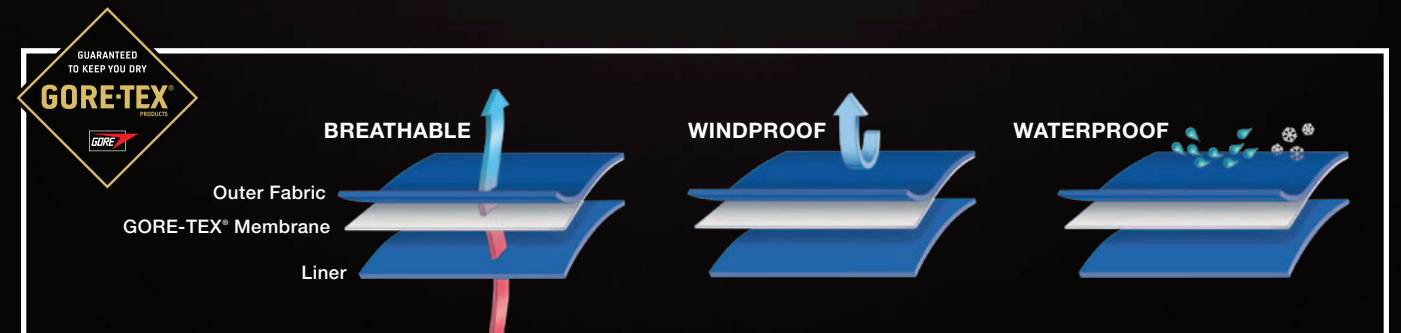
Stronger, premium zippers are engineered to withstand any element on the trail. No failures. No chance.



GORE-TEX® technology keeps moisture out and warmth in, all while staying supremely breathable.

Integrated Polaris® Vehicle Design

We took design cues directly from our machine's angles and colorways, so you and your sled are a seamless unit down to the details.



MEN'S UNINSULATED

THE ALTITUDE GETS ME AMPED, THE GEAR KEEPS ME GOING. POLARIS® INNOVATION MAKES SURE I'M WARM RIGHT WHERE I NEED IT YET OPENED UP AND FREE TO MOVE EVERYWHERE ELSE.



A. PRO JACKET

- GORE-TEX® product technology *Guaranteed to Keep You Dry*
- Max vent with 2-way adjustable pit zips and back vent
- Asymmetric style uses 330D nylon shell and 3M® Scotchlite® reflective
- Durable 2-way YKK® Vision® zippers for adjustable and comfortable fit
- Drawcord adjustable neck, waist and Lycra® cuffs to keep snow out

2865003 | Red | S-3XL
2865002 | Black | S-3XL; MT-2XLT
2865004 | KC711 | Limited Edition | S-3XL

B. PRO BIB

- GORE-TEX® product technology *Guaranteed to Keep You Dry*
- 330D nylon shell with ballistic nylon reinforcement and 3M® Scotchlite® reflective
- Articulated knees with integrated EVA knee pads for added protection
- Durable, YKK® full length 2-way adjustable water-resistant leg zippers
- External chest pocket and 2 side pockets

2865007 | Black | S-3XL; MT-2XLT



C. X-OVER JACKET

- Lightweight, fully seam-sealed hybrid 330D and 210 ripstop nylon shell
- Controlled venting with 2-way adjustable pit zips
- Drawcord adjustable neck, waist and Lycra® cuffs to keep snow out

2865006 | Red | S-3XL; MT-2XLT
2865005 | Black | S-3XL

D. X-OVER PANT

- Lightweight, fully seam-sealed hybrid 330D and 210 ripstop nylon shell
- Articulated knees with integrated EVA knee pads for added protection
- Durable, YKK® full length 2-way adjustable water-resistant leg zippers

2865008 | Black | S-3XL; MT-2XLT



BACKCOUNTRY
FREERIDE
HILLCLIMB
KC711

CHECK OUT THE KEITH CURTIS KC711 COLLECTION

MEN'S INSULATED

I DECIDE WHEN MY RIDE IS DONE, NOT THE WEATHER. MY INSULATED POLARIS® GEAR IS READY TO KEEP ANYTHING THE TRAIL THROWS AT ME OUT, AND EVERY OUNCE OF HEAT IN. ANY DAY, ALL DAY.



Removable Liner

POLARIS

Red

Zonal 3M® Thinsulate® Insulation

Controlled Venting

Highly Visible 3M® Scotchlite® Reflective

YKK® Vislon® Zipper

Black



Quilted Liner

YKK® Zippers

Zonal 3M® Thinsulate® Insulation

EVA Knee Pads

A. ADVENTURE JACKET

- GORE-TEX® product technology *Guaranteed to Keep You Dry*®
- 3-in-1 removable wearable liner with 3M® Thinsulate® zonal insulation
- Max vent with 2-way adjustable pit zips and back vent
- High-density 330D nylon shell and 3M® Scotchlite® reflective
- Drawcord adjustable neck and waist to keep snow out

2865009 | Black | S-3XL; MT-2XLT

2865010 | Red | S-3XL; MT-2XLT

B. ADVENTURE BIB

- GORE-TEX® product technology *Guaranteed to Keep You Dry*®
- Zonal 3M® Thinsulate® insulation and integrated EVA knee pads
- 330D nylon fabric with ballistic nylon reinforcement and 3M® Scotchlite® reflective
- Durable, YKK® full length 2-way adjustable water-resistant leg zipper
- Integrated boot gaiter and retention strap

2865019 | Black | S-3XL; MT-2XLT



SEE PAGE 37 FOR SIZE CHARTS

When ordering, add size code to part number. XS:01, S:02, M:03, M-Short:04, M-Tall:05, L:06, L-Short:07, L-Tall:08, XL:09, XL-Short:10, XL-Tall:11, 2XL:12, 2XL-Tall :13, 3XL:14, 4XL:15, 5XL:16

MEN'S INSULATED



A. THROTTLE JACKET

- 3-in-1 removable wearable liner with 3M® Thinsulate® zonal insulation
 - High-density 330D nylon shell and 3M® Scotchlite® reflective
 - Max vent with 2-way adjustable pit zips and back vent
 - Drawcord adjustable neck, waist to keep snow out
- 2865012 | Red | S-3XL
 2865011 | Black | S-3XL
 2865013 | Retro | S-3XL
 2865014 | Race | S-3XL

B. THROTTLE BIB

- Zonal 3M® Thinsulate® insulation and integrated EVA knee pads
 - Seam sealed, 330D nylon fabric with 840 nylon cuff and 3M® Scotchlite® reflective
 - Durable, YKK® full length 2-way adjustable water-resistant leg zipper
 - Integrated boot gaiter and retention strap
 - External chest pocket and 2 side pockets
- 2865020 | Black | S-3XL; MT-2XL



C. RIPPER JACKET

- Fixed liner with zonal 3M® Thinsulate® insulation
 - High-density 330D nylon fabric and 3M® Scotchlite® reflective
 - Controlled venting with 2-way adjustable pit zips
- 2865016 | Red | S-3XL; MT-2XL
 2865015 | Black | S-3XL; MT-2XL
 2865017 | Retro | S-3XL
 2865018 | Orange | S-3XL

D. RIPPER BIB

- Zonal 3M® Thinsulate® insulation
 - Seam sealed, hybrid 330D and 210 ripstop nylon fabric
 - Durable, YKK® full length 2-way adjustable water-resistant leg zipper
 - Integrated boot gaiter and retention strap
- 2865021 | Black | S-3XL; MT-2XL



SEE PAGE 37 FOR SIZE CHARTS

When ordering, add size code to part number. XS:01, S:02, M:03, M-Short:04, M-Tall:05, L:06, L-Short:07, L-Tall:08, XL:09, XL-Short:10, XL-Tall:11, 2XL:12, 2XL-Tall:13, 3XL:14, 4XL:15, 5XL:16



WOMEN'S INSULATED

I DOMINATE THE TERRAIN EARLY, LATE, OFTEN AND COMFORTABLY. MOTHER NATURE CAN GIVE ME HER COLDEST BUT IT'S NO MATCH FOR POLARIS®-INSULATED INNOVATION.



B. DIVA JACKET

- Fixed liner with zonal 3M® Thinsulate® insulation
- High-density 330D nylon fabric and 3M® Scotchlite® reflective
- Controlled venting with 2-way adjustable pit zips
- Drawcord adjustable neck, waist and Lycra® cuffs to keep snow out

2865028 | Pool Blue | S-3XL

2865026 | Black | S-3XL

2865027 | Retro | S-3XL



Zonal 3M® Thinsulate® Insulation

YKK® Vislon® Zipper

Pool Blue



Retro

Black



Grey

C. THROTTLE BIB

- Integrated drop seat with 2-way adjustable zippers
- Zonal 3M® Thinsulate® insulation
- High-density 330D nylon fabric and 3M® Scotchlite® reflective
- Integrated boot gaiter and retention strap

2865029 | Black | S-3XL

2865030 | Grey | S-3XL

YKK® Zippers

Drop Seat With Dual Zipper Sliders

3M® Scotchlite® Reflective Panels

Removable EVA Knee Pads

SEE PAGE 37 FOR SIZE CHARTS

When ordering, add size code to part number. XS:01, S:02, M:03, M-Short:04, M-Tall:05, L:06, L-Short:07, L-Tall:08, XL:09, XL-Short:10, XL-Tall:11, 2XL:12, 2XL-Tall:13, 3XL:14, 4XL:15, 5XL:16



Removable, Wearable Liner

YKK® Vislon® Zipper

Controlled Venting

Highly Visible 3M® Scotchlite® Reflective

Coral



Glacier

Black

A. THROTTLE JACKET

- 3-in-1 removable wearable liner with 3M® Thinsulate® Zonal insulation
- Max vent with 2-way adjustable pit zips and back vent
- High-density 330D nylon shell and 3M® Scotchlite® reflective
- Drawcord adjustable neck, waist to keep snow out
- External chest pocket and internal media pockets

2865024 | Coral | S-3XL

2865022 | Black | S-3XL

2865023 | Glacier | S-3XL

HELMETS: FULL-FACE

FOR ME IT'S SAFETY FIRST, ALTITUDE SECOND. CUSTOM POLARIS® HELMETS HELP PROTECT ME SO I CAN GO BIG, AND LOOK LIKE A SEAMLESS EXTENSION OF MY SLED WHILE DOING IT.



MODULAR

- Entire front of helmet flips open without having to remove the helmet
- Electric shield reliably prevents fogging in all conditions
- Injection-molded plastic shell
- Dual-pane shield, anti-fog and anti-scratch coating
- DOT-approved

WITH ELECTRIC SHIELD

- 2865069 | Retro | S-4XL
- 2865070 | Covert | S-4XL
- 2863148 | Black | S-4XL

WITHOUT ELECTRIC SHIELD

- 2865071 | Retro | S-4XL
- 2865072 | Covert | S-4XL
- 2865136 | Covert, ECE | S-4XL
- 2861170 | Black | S-4XL

MODULAR HELMET REPLACEMENT PARTS

- 2861234 | Clear Replacement Shield (Double Lens)
- 2861235 | Electric Shield
- 2861236 | Electric Cord Replacement
- 2862136 | Breath Deflector
- 2862137 | Breath Guard
- 2862138 | Chin Bar Axle Kit
- 2862139 | Chin Curtain
- 2862140 | Ratchet Kit/Side Plate



Retro



Covert



Covert, ECE



Black

CYCLONE ADV HELMET

- Electric shield option reliably prevents fogging
- Strong, lightweight fiberglass shell with a lightweight, impact-absorbing EPS liner for outstanding impact protection
- Dual-pane shield has anti-fog, anti-scratch coatings
- Snell® 2010 and DOT-certified

WITH ELECTRIC SHIELD

- 2864166 | Red Gloss | XS-4XL
- 2864169 | Black Gloss | XS-4XL

WITHOUT ELECTRIC SHIELD

- 2864170 | Red Gloss | XS-4XL
- 2862056 | Black Gloss | XS-4XL

CYCLONE ADV HELMET REPLACEMENT PARTS

- 2868212 | Clear Replacement Shield (Double Lens)
- 2868215 | Electric Shield
- 2869485 | Smoke Shield (Single-Pane)
- 2868445 | Clear Shield (Anti-Fog), Single-Pane
- 2868217 | Electric Cord Replacement
- 2863177 | NEW Breath Deflector
- 2867496 | Breath Deflector Extendable Tubes
- 2868444 | Ratchet Kit/Side Plate
- 2862126 | Breath Deflector
- 2862132 | Chin Vent
- 2862133 | Valance



Red Gloss



Black Gloss

AF-2.0 HELMET

- Polycarbonate and ABS alloy shell
- Lightweight, dual-density, impact-absorbing EPS liner
- Durable dual-pane shield has anti-fog, anti-scratch coatings
- Snell® 2010 and DOT-approved

- 2865143 | Matte Charcoal | XS-2XL
- 2864173 | Red Gloss | XS-2XL
- 2864175 | Silver Gloss | XS-2XL
- 2863181 | All Black | XS-2XL

AF-2.0 HELMET REPLACEMENT PARTS

- 2862125 | Breath Deflector
- 2862128 | Chin Vent
- 2862129 | Valance
- 2868212 | Clear Replacement Shield (Double Lens)
- 2868215 | Electric Shield
- 2869485 | Smoke Shield (Single-Pane)
- 2868445 | Clear Shield (Anti-Fog), Single-Pane
- 2868217 | Electric Cord Replacement
- 2863177 | Breath Deflector
- 2867496 | Breath Deflector Extendable Tubes
- 2868444 | Ratchet Kit/Side Plate



Matte Charcoal



Red Gloss



Silver Gloss



All Black



DOWNLOAD OUR FREE
POLARIS® SNOW APPAREL &
ACCESSORIES CATALOG APP

Browse the latest apparel,
accessories, videos and links

HELMETS: OPEN FACE

FLY® F2

- Composite construction shell made of aircraft-grade woven carbon fiber and Kevlar® composite materials for superior, lightweight strength
- Dual density EPS liner for impact absorption
- Multi-port air induction cooling system with tri-vent goggle anti-fog vents
- Removable washable liner and cheek pads
- Snell® M2010-, DOT- and ECE-approved

- 2865110 | Sly | XS-5XL
- 2865111 | Podium | XS-5XL
- 2865112 | Dominate | XS-5XL
- 2865113 | KC711 | XS-5XL
- 2865114 | Sly, ECE | XS-5XL

VISOR-REPLACEMENT, FLY® F2

- 2865115 | Sly
- 2865116 | Podium
- 2865117 | Dominate
- 2865118 | KC711

MOUTH PIECE, FLY® F2

- 2865119 | Sly
- 2865120 | Podium
- 2865121 | Dominate
- 2865122 | KC711

FLY® REPLACEMENT PARTS

- 2863162 | Visor Screw Kit
- 286316401 | Cold Weather Plug Kit (XS/S)
- 286316403 | Cold Weather Plug Kit (M/L)
- 286316409 | Cold Weather Plug Kit (XL/2XL)
- 2863165 | Breath Deflector
- 2863195 | Cheek Pad - 20mm
- 2863196 | Cheek Pad - 25mm (2XL)
- 2863197 | Cheek Pad - 30mm (L)
- 2863198 | Cheek Pad - 35mm (S, M, L)
- 2863199 | Cheek Pad - 40mm (XS)



Sly



Podium

Dominate

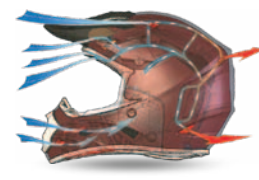
Keith Curtis

Sly, ECE



COMPOSITE CONSTRUCTION SHELL

Outer shell is constructed using state-of-the-art, aircraft-grade woven carbon fiber and Kevlar® composite materials, which creates superior strength while remaining extremely light.



MULTI-PORT AIR INDUCTION COOLING SYSTEM

Eleven intake and four exhaust vents create massive airflow to keep your head cool — so cool that we include an air vent plug kit to keep you warm and cozy when riding in cold weather.



DUAL DENSITY EPS LINER

Two layers of expanded polystyrene, one softer and one slightly harder, combine to give you more progressive impact absorption.

DEMON 1.1 HELMET

- Lightweight, protective composite fiberglass shell
- Dual density EPS liner for impact absorption
- Aerodynamic, multi-channel flow-through ventilation system
- Moisture-wicking QwickDry® removable, washable liner
- Snell® M2010 and DOT-approved

- 2864176 | Red Gloss | S-3XL
- 2864177 | Orange Gloss | S-3XL
- 2864178 | Silver Gloss | S-3XL
- 2864179 | Assault® Special Edition | S-3XL

REPLACEMENT VISOR

- 2864186 | Red Gloss
- 2864187 | Orange Gloss
- 2864188 | Silver Gloss
- 2864189 | Assault® Matte

DEMON REPLACEMENT PARTS

- 2861233 | Breath Deflector
- 2869484 | Visor Screw Kit



Red Gloss



Orange Gloss

Silver Gloss

Assault® Special Edition

TENACITY HELMET

- Lightweight polycarbonate shell
- Mouth air intake vent, eyebrow vents and six rear vents
- Removable, washable liner
- DOT/ECE-approved

- 2860144 | Black Matte | S-2XL
- 2864180 | Red Gloss | S-2XL
- 2864181 | Magenta Gloss | S-2XL
- 2864182 | White Gloss | S-2XL
- 2864183 | Retro Gloss | S-2XL

TENACITY REPLACEMENT VISOR

- 2864190 | Red Gloss
- 2864191 | Magenta Gloss
- 2864192 | White Gloss
- 2864193 | Retro Gloss
- 2862120 | Visor Screw Kit



Black Matte



Red Gloss

Magenta Gloss

White Gloss

Retro Gloss

GOOGLES & BALACLAVAS

I SEE THE LINE CLEARLY, I DOMINATE THE TERRAIN CLEANLY. WHEN MY EYES AND MY HEAD ARE DIALED-IN, MY RIDE FOLLOWS SUIT.



509 FOR POLARIS

A-B. AVIATOR

- Prevents snow build-up with minimized-depth frame with rimless design
- Dual-pane, shatterproof, cold-weather-specific gold-tint lens
- Secure triple silicon-lined strap
- Removable nose mask

A. 2865061 | Gold Standard | Polarized/Yellow | OSFM

B. 2865062 | SS | Fire Mirror/Clear | OSFM

REPLACEMENT LENSES

2863034 | 509* for Polaris* Aviator | Smoke Tint/Bronze Mirror | OSFM

2864200 | 509* for Polaris* Aviator | Yellow Tint/Bronze Mirror | OSFM

2863035 | 509* for Polaris* Aviator | Yellow Tint | OSFM

2864129 | Clear | OSFM

2864133 | Fire Mirror/Clear | OSFM

2864134 | Polarized Yellow | OSFM

2864135 | Polarized Smoke | OSFM



509 FOR POLARIS

C-H. SINISTER X5 GOGGLE

- Continual flow of air with 14 vents across the top, sides, bottom and lens
- Dual-pane, shatterproof, cold-weather-specific yellow tint lens with chrome finish
- Secure triple silicon-lined strap
- Removable nose mask

C. 2865063 | Stealth | Polarized/Smoke | OSFM

D. 2865064 | Burandt Edition, Matte Carbon | Polarized/Yellow | OSFM

E. 2865065 | Platinum | OSFM

F. 2865066 | Fire | OSFM

G. 2865067 | Tundra | OSFM

H. 2865068 | KC711 | OSFM

SINISTER X5 REPLACEMENT LENSES

2865123 | Clear | OSFM

2865124 | Yellow | OSFM

2865125 | Chrome Mirror / Yellow Tint | OSFM

2865126 | Fire Mirror/Rose Tint | OSFM

2865127 | Polarized Yellow Lens | OSFM

2865128 | Polarized Smoke Tint | OSFM

REPLACEMENT

2863040 | 509* for Polaris* Anti-fog Fan | OSFM



MID-WEIGHT STRETCH FLEECE BALACLAVA

- 90% polyester, 10% spandex
- Brushed finish inside for comfort
- Easy care, machine washable

2863085 | OSFM



BASIC BALACLAVA

- Increased warmth with lightweight polyester/spandex (95/5%)
- Added protection with extra long neck
- Easy care, machine washable

2862366 | OSFM



DOWNLOAD OUR FREE
POLARIS® SNOW APPAREL &
ACCESSORIES CATALOG APP

Browse the latest apparel,
accessories, videos and links

GLOVES

WHEN I'VE GOT A GOOD GRIP ON THE THROTTLE, I'VE GOT A GRIP ON MY WHOLE MACHINE. POLARIS® GLOVES ARE THE PERFECT COMBINATION OF COMFORT, WARMTH AND PROTECTION. JUST WHAT I NEED.



ADVOCATE II GLOVE

- Leather palm with sure grip technology
- 120g Hyperloft Insulation
- Microfiber/twill/nylon oxford shell with EVA padded inserts
- Dry-zone breathable insert

2865036 | Black | S-3XL



PINNACLE GLOVE

- Leather palm with sure grip technology
- 100g 3M® Thinsulate™ insulation
- Dry-zone breathable insert
- Rolled finger tip construction
- Nose wipe material on thumb

2865035 | Black | XS-3XL



EXPLORER II GLOVE

- Nylon shell and synthetic palm with sure grip technology
- 200g Hyperloft insulation
- Dry-zone breathable insert

2865037 | Black | S-3XL

2865038 | Red | S-3XL



PEAK II GLOVE

- Leather palm with sure grip technology
- 100g Hyperloft insulation
- Dry-zone breathable insert

2865039 | Black | XS-3XL



ADVENTURE GLOVE

- Leather palm with sure grip technology
- 200g 3M® Thinsulate™ Insulation
- Dry-zone breathable insert
- Adjustable gauntlet closure
- Nose wipe material on thumb

2865034 | Black | XS-3XL



WOMEN'S CAPTIVATE GLOVE

- 150g poly fill insulation
- Nylon oxford shell and Amara™ palm
- Gauntlet-style cuff with elastic pull and toggle
- Amara™ pull patch makes it easy to pull gloves on

2864110 | Women's | Black | S-2XL



MEN'S ELEVATE GLOVE

- Leather palm and nylon shell
- Reflective piping
- Nose wipe material on thumb

2864114 | Black | XS-3XL

BOOTS & BAGS

I'M SEAMLESS FROM HEAD TO FOOT. MY POLARIS® BOOTS ARE THE DIFFERENCE BETWEEN AN UNCOMFORTABLE RIDE AND A TRIP WHERE THE VERY LAST OF MY WORRIES ARE FREEZING TOES.



SWITCHBACK® BOOT

- Durable leather outer and toe cap
 - Integrated IceLock™ sole technology provides superior traction
 - 600g of 3M® Thinsulate® Insulation
 - Dri-lex moisture management fabrics keep you warm and wick moisture
 - 3M® Scotchlite® Reflective
- 2865040 | Black | Full Sizes 5-14



Dri-lex Moisture Management

Ice Lock Sole Technology



POLARIS® TRAIL BOOT

- Removable moisture-wicking 20mm zylex 4F liner (Rated to -100F)
- Waterproof flexible synthetic rubber shell
- High-traction rubber out-sole
- Lace lock on snow collar, adjustable mid-foot laces and reflective piping

2864194 | Black | Full Sizes 6-13



POLARIS® TOURING BOOT

- Removable moisture-wicking 8 mm zylex liner (Rated to -40F)
- Lightweight and waterproof synthetic rubber shell
- High-traction rubber out-sole
- Lace lock on snow collar; adjustable mid-foot strap

2864195 | Black | Full Sizes 4-13



ADVENTURE SOCK

2865042 | Tall



SWITCHBACK® SOCK

2865041 | SB



A. OGIO® 9800 ROLLER BAG

- 9,800 cu. in. capacity
- 2864212 | Subtle Stripe



B. OGIO® 8800 TRUCKER

- 8,800 cu. in. capacity
- 2864213 | Subtle Stripe



C. OGIO® LOADER 7600

- 7,600 cu. in. capacity
- 2864214 | Subtle Stripe



D. OGIO® ENDURANCE DUFFLE BAG

- 3,000 cu. in. capacity
- 2864215 | Subtle Stripe



E. OGIO® BANDIT BACKPACK

- 1,850 cu. in. capacity
- 2864216 | Subtle Stripe



F. OGIO® WATERPROOF BACKPACK

- 1,600 cu. in. capacity
- 2864217 | Charcoal Gray



DOWNLOAD OUR FREE
POLARIS® SNOW APPAREL &
ACCESSORIES CATALOG APP

Browse the latest apparel,
accessories, videos and links

MEN'S LIFESTYLE


PEAK PERFORMANCE NEVER STOPS. MY GEAR LETS ME GO BIGGER AND DO BETTER ON MY SLED, BUT ALSO KEEPS ME COMFORTABLE AND STYLISH WHEN THE RIDE IS OVER.



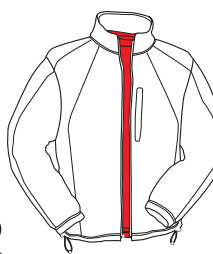
U.P. BASE LAYER
 · 93% polyester and 7% spandex jersey knit
 · Reflective logos
 2864030 | Top | Grey | S-3XL
 2864031 | Bottom | Grey | S-3XL




BLACK ICE BASE LAYER
 · 93% polyester and 7% spandex jersey knit
 · Contrast stitching, reflective logos
 2864033 | Top | Black | S-3XL
 2864032 | Bottom | Black | S-3XL



**STEP 1
BASE LAYER**
 Base layer needs to wick sweat away from your skin. Polyester is good, cotton is bad.



**STEP 2
INSULATING LAYER**
 Insulating layer must work with the base layer to transfer moisture. Polyester and fleece are best. Includes mid-to-heavier layer.



**STEP 3
OUTER LAYER**
 Outer layer must block wind and allow moisture to escape. Add or remove layers as needed to stay warm and comfortable.



VERTICAL CLIMB PERFORMANCE SHELL
 · 88% polyester and 12% spandex jersey fleece shoulders and sleeves
 · 100% nylon shell with 100g Thermo[®] and quilting
 · Two zippered hand warmer pockets
 · Polaris[®] logo on left chest and left sleeve; star on back of neck
 2864028 | Black | S-3XL
 2864029 | Red/Black | S-3XL



MEN'S FULL ZIP MOCK
 · 88% polyester and 12% spandex blend in a knit top with wicking treatment
 · Woven, wrap-around patch
 · Custom front puller
 2865105 | S-3XL



BLACKCOMB 1/4 ZIP
 · 100% polyester sweater knit with a fleece back
 · Woven nylon fabric on shoulders with tight quilting
 · Left chest pocket with YKK[®] zipper
 · 3" collar
 · 2-needle collar finish at neck
 2865086 | Black | S-3XL
 2865133 | Red | S-3XL



TOP END MOCK JACKET
 · Jacket face is made from 100% polyester-bonded fleece
 · Back is made of a wearable 95% polyester and 5% spandex blend
 · 4-thread safety stitch for all joining seams
 · Anti-pill and anti-static for ultimate comfort
 · Nylon rope puller with logo at chest and pockets
 2865058 | S-3XL



OPS TECH LONG SLEEVE
 · Effective mid-layer in layering system
 · AP-360[®] wicking and antimicrobial
 · Excellent moisture wicking performance
 · Far-infrared (heat enhancing), anti-static, anti-pill
 2864096 | Black | S-5XL



ANNAPURNA MID-LAYER
 · 100% polyester polar fleece, anti-static/anti-pill
 · Zippered hand warmer pockets
 · Polaris[®] logo on left chest; ellipse on back of shoulders
 2864019 | Navy | S-5XL
 2864020 | Black | S-5XL



CORE PERFORMANCE LONG SLEEVED TEE
 · 100% polyester jersey knit with brushed back
 2863484 | Navy | M-2XL



EVOLUTION PANT
 · Expect flexibility – with articulated knees
 · Nylon/spandex blend features anti-static and anti-pilling technology
 · Quarter top pockets, back patch pockets, and welt cargo pockets
 · Diamond-gusset crotch that affords the ultimate in comfort
 2865088 | S-3XL

SEE PAGE 37 FOR SIZE CHARTS
 When ordering, add size code to part number. XS:01, S:02, M:03, M-Short:04, M-Tall:05, L:06, L-Short:07, L-Tall:08, XL:09, XL-Short:10, XL-Tall:11, 2XL:12, 2XL-Tall:13, 3XL:14, 4XL:15, 5XL:16

MEN'S LIFESTYLE



SLOPE HOODIE

- 92% polyester and 8% spandex blend
- The ultimate in durability – with a shoulder to shoulder self-fabric neck taping and 2-needle, 4-thread cover seaming at cuffs and sleeves
- Unlined 2-piece hood with self-fabric taping
- Woven, wrap-around patch

2865083 | S-3XL



SIGNATURE RETRO HOODIE

- 100% cotton
- The ultimate in durability – with a shoulder to shoulder self-fabric neck taping
- Polaris® logo aglets
- Kangaroo pocket

2865087 | S-3XL



KC711 KING HOODIE

- 92% polyester and 8% spandex blend
- Anti-pill and anti-static technology
- 4-thread safety stitch for all joining seams
- Raglan sleeves
- YKK® zippers with custom puller

2865106 | S-3XL



VORTEX SOFT-SHELL RACING JACKET

- Jacket face is 100% polyester-bonded fleece
- Back is 95% polyester and 5% spandex blend
- 4-thread safety stitch for all joining seams
- Garage and storm flaps for lasting wear
- YKK® zippers

2865057 | Sponsor Logo | S-3XL
2865073 | No Sponsor Logo | S-3XL



TETON CHECK SOFT-SHELL

- 100% polyester soft-shell jacket with 3000/3000 lamination
- Full-zip front with two zippered hand warmer pockets
- Star on left chest, Polaris® logo on back of left shoulder

2864027 | Black Plaid | S-3XL



CALLAGHAN VALLEY PLAID

- 62% polyester, 33% Rayon, and 5% spandex twill weave
- Embroidered star at lower placket
- 5-thread safety stitch at all seams
- Shirttail hem

2865080 | S-3XL



TETON CHECK FLANNEL

- 100% cotton yarn dye
- Full button front with collar and button cuffs
- Star on left chest; Polaris® logo on back of shoulders

2864026 | Black Plaid | S-3XL



BACKCOUNTRY FLANNEL

- 100% cotton lightweight brushed flannel
- 5-thread safety stitch at all seams
- Front yoke
- Left chest pocket

2865081 | S-3XL



BOONDOCKER HOODIE

- 100% polyester-bonded fleece
- Anti-pill and anti-static for ultimate comfort
- Polyester drawstrings with Polaris® logo aglets
- 2-needle cover stitch at hood and pocket openings
- Custom zipper puller

2865085 | S-3XL



SUMMIT WINDOWPANE HOODIE

- 100% cotton jersey fleece knit
- Embroidered logo

2864015 | Navy | S-3XL



ICE BLAST HOODIE

- 60% cotton and 40% polyester waffle shell
- Embroidered logo

2863490 | Red | M-3XL



TURBO PIT CREW DEALER SHIRT

- 88% nylon and 12% spandex with durable metal buttons
- Single-needle top-stitch detail
- 5-thread safety stitch for all joining seams
- Left and right chest and sleeve logos
- Center back Polaris® logo

2865056 | S-3XL



TRAILBLAZER STRIPE

- 65% polyester, 34% Rayon, and 1% spandex
- 5-thread safety stitch at all seams
- Reactive printed stripe detail on front
- Back yoke
- Polaris® logo embroidery above chest pocket

2865082 | S-3XL



OPS TECH POLO

- 100% polyester micro pique with rib collar
- Quarter-zip front, zippered pocket on left chest, welded zippers
- Polaris® logo on left chest and on back of shoulders

2864017 | Navy | S-5XL
2864018 | Black | S-5XL

SEE PAGE 37 FOR SIZE CHARTS
When ordering, add size code to part number. XS:01, S:02, M:03, M-Short:04, M-Tall:05, L:06, L-Short:07, L-Tall:08, XL:09, XL-Short:10, XL-Tall:11, 2XL:12, 2XL-Tall :13, 3XL:14, 4XL:15, 5XL:16



DOWNLOAD OUR FREE POLARIS® SNOW APPAREL & ACCESSORIES CATALOG APP
Browse the latest apparel, accessories, videos and links



APPAREL

OUTERWEAR | HELMETS | GOGGLES & BALACLAVAS | GLOVES | BOOTS & BAGS | LIFESTYLE | BEANIES & CAPS | YOUTH | PROTECTION | SIZE CHARTS

TERRAIN DOMINATION | POLARIS

MEN'S LIFESTYLE

A. TERRAIN DOMINATION LONG SLEEVE

- 95% cotton and 5% spandex blend with a bio-wash finish that makes the fabric extremely soft
- The ultimate in durability – with a shoulder to shoulder self-fabric neck taping and 4-thread safety stitch at all seams
- 2-needle, 4-thread cover stitch hem and sleeves
- Graphic is a discharge print with embroidery

2865078 | S-3XL



B. GOGEBIC TWOFER

- 100% cotton jersey knit and 100% cotton waffle sleeves

2864011 | Red/Navy | S-3XL

C. AMERICAN VINTAGE TEE

- 95% cotton and 5% spandex blend
- The ultimate in durability – with a shoulder to shoulder self-fabric neck taping and 4-thread safety stitch at all seams
- 2-needle cover stitch
- Woven, wrap-around patch

2865077 | S-3XL



D. MAPLE LEAF TEE

- 95% cotton and 5% spandex blend
- The ultimate in durability – with a shoulder to shoulder self-fabric neck taping and 4-thread safety stitch at all seams
- 2-needle, 4-thread cover stitch hem and sleeves

2865075 | S-3XL

E. POLARIS® STAR TEE

- 95% cotton and 5% spandex blend
- The ultimate in durability – with a shoulder to shoulder self-fabric neck taping and 4-thread safety stitch at all seams
- 2-needle, 4-thread cover stitch hem and sleeves
- Woven, wrap-around patch

2865076 | S-3XL

F. KC711 TEE

- 95% cotton and 5% spandex blend
- The ultimate in durability – with a shoulder to shoulder self-fabric neck taping and 4-thread safety stitch at all seams
- 2-needle cover stitched hems and sleeves
- Hemmed bottom and sleeves
- Crew neck
- Left sleeve embroidery
- Hang tag

2865107 | S-3XL



G. THROTTLE TEE

- 95% combed cotton and 5% spandex
- High-density prints on both the chest and sleeves
- 4-thread safety stitch at all joining seams
- Wrap-around bug tag

2865054 | S-3XL

H. BLUE PRINT TEE

- 95% cotton and 5% spandex blend with a bio-wash finish that makes the fabric extremely soft
- The ultimate in durability – with a shoulder to shoulder self-fabric neck taping and 4-thread safety stitch at all seams
- 2-needle cover stitch hem
- Woven, wrap-around patch

2865074 | S-3XL

POLARIS

ENGINEERED PARTS
ACCESSORIES & APPAREL

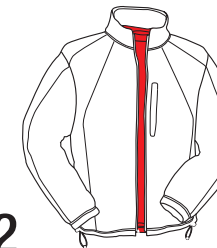
WOMEN'S LIFESTYLE

I BELIEVE THAT FASHIONABLE DESIGN DOESN'T HAVE TO STOP AT SLED ANGLES AND HELMET DECALS. MY POLARIS® LIFESTYLE GEAR LETS ME PUT ON AND SHOW OFF, EVEN OFF THE TRAIL.



STEP 1 BASE LAYER

Base layer needs to wick sweat away from your skin. Polyester is good, cotton is bad.



STEP 2 INSULATING LAYER

Insulating layer must work with the base layer to transfer moisture. Polyester and fleece are best. Includes mid-to-heavier layer.



STEP 3 OUTER LAYER

Outer layer must block wind and allow moisture to escape. Add or remove layers as needed to stay warm and comfortable.



LADIES TOP END MOCK

- 100% polyester-bonded fleece
- Back is 95% polyester and 5% spandex blend
- 4-thread safety stitch for all joining seams
- Anti-pill and anti-static for ultimate comfort
- Nylon rope puller with logo at chest and pockets

2865059 | XS - 2XL

BLACK ICE BASE LAYER TOP

- 88% polyester and 12% spandex jersey knit, contrast stitching, reflective script logos

2864060 | Black | S-3XL

BLACK ICE BASE LAYER PANT

- 88% polyester and 12% spandex jersey knit
- Polaris® script logo near left ankle

2864061 | Black | S-3XL

SEE PAGE 37 FOR SIZE CHARTS

When ordering, add size code to part number. XS:01, S:02, M:03, M-Short:04, M-Tall:05, L:06, L-Short:07, L-Tall:08, XL:09, XL-Short:10, XL-Tall:11, 2XL:12, 2XL-Tall:13, 3XL:14, 4XL:15, 5XL:16



APPAREL

OUTERWEAR | HELMETS | GOGGLES & BALACLAVAS | GLOVES | BOOTS & BAGS | LIFESTYLE | BEANIES & CAPS | YOUTH | PROTECTION | SIZE CHARTS

TERRAIN DOMINATION POLARIS

WOMEN'S LIFESTYLE



BLACKCOMB 1/4 ZIP
 · Long sleeve poly knit fleece 1/4 zip mock
 2865130 | XS-2XL



POWDER MID-LAYER
 · 100% polyester polar fleece with 88% polyester and 12% spandex jersey fleece side inserts
 · Two hand warmer pockets
 · Retro Polaris® logos on left chest and back of shoulders
 2864055 | Blue | S-3XL, 1W-3W
 2864056 | Magenta | S-3XL, 1W-3W



OPS TECH LONG SLEEVE
 · Effective mid-layer in layering system
 · AP-360° wicking and antimicrobial
 · Excellent moisture wicking performance
 · Far-infrared (heat enhancing), anti-static, anti-pill
 2864097 | Black | XS-3XL, 1W-3W



KAUMAJET 1/2 ZIP
 · 85% polyester and 5% spandex blend
 · 2-needle cover stitch at bottom, sleeves, and body
 · Upper collar and center back neck embroidery
 · Self-fabric neck taping center front to opposite center front
 2865098 | XS-2XL



OLYMPIC FULL ZIP FLEECE
 · 92% polyester and 8% spandex blend
 · Mock neck
 · Self-fabric neck taping center front to opposite center front
 · 4-needle cover stitch at bottom and sides
 · 2-needle cover stitch at sleeve ends
 2865099 | XS-2XL



SWAN RANGE PULLOVER
 · 93% cotton and 7% spandex blend with a bio-wash finish that makes the fabric extremely soft
 · The ultimate in durability – with a shoulder to shoulder self-fabric neck taping and 4-thread safety stitch at all seams
 · Water-base print on both the shoulders and the sleeves
 2865089 | Grey | XS-2XL
 2865090 | Black | XS-2XL



SAWATCH RANGE HOODIE
 · 100% cotton
 · 4-thread safety stitch at all seams
 · 2-needle cover stitch at bottom, sleeves, and body
 · Kangaroo pockets
 · 2-piece hood
 2865095 | XS-2XL



THROWBACK HOODIE
 · 100% cotton
 · The ultimate in durability – with a shoulder to shoulder self-fabric neck taping and 4-thread safety stitch at all seams
 · 2-needle cover stitch at bottom, sleeves, and body
 · Kangaroo pockets
 2865097 | XS-2XL



HILL CLIMB HOODIE
 · 90% polyester and 10% spandex blend
 · The ultimate in fashion – with color blocked styling with applied stripes
 · The ultimate in durability – with 2-needle cover stitched hems
 2863495 | Red/Black | XS-2XL



FOOTHILLS FLANNEL
 · 100% cotton lightweight brushed flannel with a bio-wash finish that makes the fabric extremely soft
 · Double-turned, clean-finish hem
 · 5-thread safety stitch at all seams
 · Princess seams throughout
 2865094 | XS-2XL



RETRO PULLOVER
 · 100% cotton sub jersey with a bio-wash finish that makes the fabric extremely soft
 · The ultimate in durability – with a shoulder to shoulder self-fabric neck taping and 4-thread safety stitch at all seams
 · 2-needle cover stitch at bottom, sleeves, and body
 2865091 | XS-2XL



SALT RIVER SHIRT
 · 100% cotton with a bio-wash finish that makes the fabric extremely soft
 · The ultimate in durability – with a shoulder to shoulder self-fabric neck taping and 4-thread safety stitch at all seams
 · 2-needle cover stitch at bottom, sleeves, and body
 · Metal, Polaris® logo buttons
 2865092 | Grey | XS-2XL
 2865093 | Pool Blue | XS-2XL



OPS TECH POLO
 · 100% polyester micro pique with rib collar
 · Flattering fitted cut
 · Quarter-zip front, zippered pocket on left chest
 · Polaris® logo on left chest and on back of shoulders
 2864051 | Navy | XS-3XL, 1W-3W
 2864052 | Black | XS-3XL, 1W-3W



EAGLE RIVER GARAGE SHIRT
 · 60% cotton and 40% polyester Poplin weave
 · Flattering, fitted cut
 · Full button front with left chest pocket
 · Polaris® logo on left chest; ellipse on back of shoulders
 2864103 | Navy | S-3XL
 2864104 | Black | S-3XL

SEE PAGE 37 FOR SIZE CHARTS
 When ordering, add size code to part number. XS:01, S:02, M:03, M-Short:04, M-Tall:05, L:06, L-Short:07, L-Tall:08, XL:09, XL-Short:10, XL-Tall:11, 2XL:12, 2XL-Tall:13, 3XL:14, 4XL:15, 5XL:16



APPAREL

OUTERWEAR | HELMETS | GOGGLES & BALACLAVAS | GLOVES | BOOTS & BAGS | LIFESTYLE | BEANIES & CAPS | YOUTH | PROTECTION | SIZE CHARTS

TERRAIN DOMINATION POLARIS

BEANIES & CAPS

I TOP OFF MY POLARIS® LOOK WITH AN EXCLUSIVELY DESIGNED CAP OR BEANIE. I'M SEAMLESS FROM THE TOP DOWN.



A. SIGNATURE BEANIE

- 100% Acrylic with 3M® Thinsulate®
- 2865142 | Red | OSFM
- 2865141 | Black | OSFM

B. SUMMIT WINDOWPANE BEANIE

- 100% acrylic
- Polaris® logo patch
- 2864042 | Blue Plaid | OSFM

D. STAR BEANIE

- 100% acrylic rib knit
- Woven snowflake graphic; Polaris® Racing logo on patch
- 2863493 | Black | OSFM

C. NIGHTGLOW RMK® BEANIE

- 100% acrylic
- Embroidered red RMK® logo
- 2864092 | Black | OSFM

E. ICE CAMO PERFORMANCE BEANIE

- 97% polyester/3% spandex jersey knit
- Woven Ice camo graphic and Polaris® logo
- 2864081 | Ice Camo | OSFM



F. SALISH KNITTED CAP

- 100% acrylic knitted Polaris® beanie
- 2865104 | OSFM

I. EAGLE RIVER STRIPE BEANIE

- 100% acrylic
- Embroidered retro Polaris® logo
- 2864043 | Navy | OSFM

K. WACONIA EARFLAP

- 100% acrylic
- Embroidered retro Polaris® logo on earflap
- 2864067 | Navy/Red | OSFM

G. TRACE LAKE KNITTED CAP

- 100% acrylic
- Polaris® script logo and snowflake graphic
- 2864066 | Black | OSFM

J. SNOWFALL EARFLAP

- 100% acrylic
- Embroidered Polaris® script logo
- 2864068 | Black/Magenta | OSFM

L. EAGLE RIVER GIFT SET

- 100% acrylic
- Embroidered retro Polaris® logo on beanie and on scarf
- 2864069 | Navy | OSFM

H. WINDCHILL HEADBAND

- 100% polyester polar fleece
- Embroidered Polaris® script logo
- 2864065 | Black/Grey | OSFM



TEAM CAP

- Cotton twill
- OSFM-snapback
- Retro logos
- 2865145 | Black | OSFM



PRO MESH ADJUSTABLE CAP

- 100% cotton and 100% polyester mesh back
- PRO RMK® logo on front; RMK® logo on back
- 2864093 | Black | OSFM



THROWBACK CAP

- Wool/spandex blend
- Flexfit sizing S/M and L/XL
- Metal retro Polaris® "P" logo
- 2865144 | Gray | S/M
- 2865138 | Gray | L/XL



HANG TIME ADJUSTABLE CAP

- Adjustable cap made from a tech-stretch fabric
- 8-stitch bill allows you to adjust the brim exactly to your own specifications
- 98% polyester/2% spandex
- Regular embroidery logos
- 2863487 | Red/Black | OSFM



ENGINEERED CAP

- Mesh back
- Wool spandex front panel
- Polaris Engineered™ patch logo
- 2865139 | Black | OSFM



CORE MESH CAP

- 100% cotton brushed twill with polyester sponge mesh
- Polaris® Racing logo on front; ellipse logo on back
- 2863488 | Navy | OSFM



QUALIFIER CAP

- Fitted cap made from a tech-stretch fabric
- 8-stitch bill allows you to adjust the brim exactly to your own specifications
- 98% polyester and 2% spandex
- Regular embroidery logos
- 2865060 | S-M/L-XL



SUMMIT WINDOWPANE FITTED CAP

- 100% cotton twill
- Polaris® logo across front and on back
- 2864034 | Black Plaid | OSFM



RETRO TRUCKER CAP

- 8-stitch bill allows you to adjust the brim exactly to your own specifications
- 100% cotton front panels on the back and bill
- 100% polyester mesh back panels
- Soft brush front panels, constructed and fused buckram
- Snap back closure
- 2865103 | OSFM



LOOK BACK RETRO CAP

- 100% cotton twill
- Retro Polaris® logo on front; retro Polaris® "P" logo on back
- 2864041 | White | OSFM



SLOPE CAP

- 8-stitch bill allows you to adjust the brim exactly to your own specifications
- 100% cotton twill hat
- Features soft brushed, constructed and fused buckram
- Snap back closure
- 2865100 | OSFM
- 2865101 | Youth



TETON CHECK FITTED CAP

- 100% cotton flannel yarn dye
- Polaris® logo on left front and on back
- 2864035 | Navy Plaid | S/M



KC711 CAP

- 8-stitch bill allows you to adjust the brim exactly to your own specifications
- Plastic adjustable tab
- 3-D embroidery
- Twill brushed
- 2865108 | S-M/L-XL



LEGACY RETRO CAP

- 100% cotton twill
- Retro Polaris® "P" logo on front; retro Polaris® logo on back
- 2864040 | Red/Navy | OSFM

All caps and beanies are One Size Fits Most, unless otherwise noted. Note to Dealers: caps and beanies are sold in packs of 6.

YOUTH

AMPED DOESN'T DISCRIMINATE BY AGE. RIDING IS IN MY BLOOD AND I WEAR IT ON MY SLEEVE.



A. POLARIS® YOUTH BOOT

Youngsters will enjoy reliable warmth in all their winter activities with these waterproof, comfortable boots.

WARMTH: Removable 8 mm Zylex liner (rated to -40F); moisture-wicking liner

UPPERS: Lightweight and waterproof synthetic rubber shell; waterproof 600-denier nylon upper

SOLE: High-traction rubber out-sole

ADDITIONAL FEATURES: Lace lock on snow collar

2864196 | Black | Full Sizes 1-6



B. YOUTH TOASTER MITTEN AND GLOVE

Youth Mittens provide young riders with warmth, comfort and a great fit. These mittens offer outstanding value and are great for snowmobiling as well as for general winter activities.

SHELL: 330-denier Taslan® nylon

WATERPROOF: Waterproof insert

INSULATION: Thermolite® insulation, 100g on back of hand, 100g on palm side

ADDITIONAL FEATURES: Glove has pre-curved fingers, sure-grip palm, extra padding on outside of hand, sure-grip wrapped fingers

SAFETY: Reflective piping

2862068 | Mitten | Black | S-XL

2862069 | Glove | Black | S-XL



C. BACK COUNTRY POM BEANIE

• 100% acrylic

• Polaris® logo on front and on patch

2864076 | Black/Red | One-size

D. YOUTH SNOWFALL EARFLAP

• 100% acrylic

• Polaris® script logo on front

2864077 | Black/Magenta | One-size



E. YOUTH RIPPER JACKET

- 3M® Thinsulate® zonal insulation
- 330D nylon embossed fabric
- Polaris D-ring at bottom hem for kill switch
- Highly visible 3M® Scotchlite® reflective

2865031 | Boys | Red | XS-XL



F. YOUTH DIVA JACKET

- 3M® Thinsulate® zonal insulation
- 330D nylon fabric
- Polaris D-ring at bottom hem for kill switch
- Highly visible 3M® Scotchlite® reflective

2865032 | Girls | Pool Blue | XS-XL



G. YOUTH RIPPER BIB

- 3M® Thinsulate® zonal insulation
- Hybrid 330D and 210 ripstop nylon shell
- Highly visible 3M® Scotchlite® reflective
- Snow gaiter with retention snap

2865033 | Black | XS-XL



H-I. YOUTH FULL-FACE HELMET

This Youth Full-Face Helmet provides protection, great visibility and a comfortable fit. Its strong, durable, injection-molded thermoplastic ABS shell provides protection against impact, wind and the elements.

SHELL: Injection-molded thermoplastic ABS

VENTS: Chin, forehead and rear exhaust vents

INTERIOR: Removable, washable liner

BREATH DEFLECTOR: Removable breath deflector

SAFETY: DOT/ECE-approved

H. 2862059 | Red | S-L

I. 2862060 | Silver | S-L

REPLACEMENT PARTS

2861243 | Clear Replacement Shield

SEE PAGE 37 FOR SIZE CHARTS

When ordering, add size code to part number. XS:01, S:02, M:03, M-Short:04, M-Tall:05, L:06, L-Short:07, L-Tall:08, XL:09, XL-Short:10, XL-Tall:11, 2XL:12, 2XL-Tall:13, 3XL:14, 4XL:15, 5XL:16

YOUTH LIFESTYLE

A. TERRAIN DOMINATION

- 95% cotton and 5% spandex blend with a bio-wash finish that makes the fabric extremely soft
- The ultimate in durability – with a shoulder to shoulder self-fabric neck taping and 4-thread safety stitch at all seams
- 2-needle, 4-thread cover stitch hem and sleeves
- Graphic is a discharge print with embroidery

2865079 | XS-XL



B. SLOPE HOODIE

- 92% polyester and 8% spandex blend
- The ultimate in durability – with a shoulder to shoulder self-fabric neck taping and 2-needle, 4-thread cover seaming at cuffs and sleeves
- Unlined 2-piece hood with self-fabric taping
- Woven, wrap-around patch

2865084 | XS-XL



C. THROTTLE TEE

- 95% combed cotton and 5% spandex
- 4-thread safety stitch at all joining seams
- Wrap-around bug tag

2865055 | S-3XL



D-E. YOUTH BLACKCOMB 1/4 ZIP

- 100% polyester sweater knit with a fleece back
- Woven nylon fabric on shoulders with tight quilting
- Left chest pocket with YKK® zipper
- 3" collar
- 2-needle collar finish at neck

D. 2865131 | Boys | S-XL

E. 2865132 | Girls | S-XL



F. SAWATCH RANGE HOODIE

- 100% cotton
- 4-thread safety stitch at all seams
- 2-needle cover stitch at bottom, sleeves, and body
- Kangaroo pockets
- 2-piece hood

2865096 | S-XL



SEE PAGE 37 FOR SIZE CHARTS

When ordering, add size code to part number. XS:01, S:02, M:03, M-Short:04, M-Tall:05, L:06, L-Short:07, L-Tall:08, XL:09, XL-Short:10, XL-Tall:11, 2XL:12, 2XL-Tall :13, 3XL:14, 4XL:15, 5XL:16

PROTECTION



A. TEKVEST® FREESTYLE

The Freestyle delivers versatile, reliable and comfortable upper body protection and outstanding value. Fits comfortably and protects the chest, ribs and clavicles.

SHELL: Strong, protective UHMW panels cover shoulders; front and rear mesh panels promote cooling airflow

FIT: Adjustable strap system for perfect fit

SAFETY: Optional quick-attach shoulder pads available for upper arm coverage

ADDITIONAL FEATURES: Large arm openings for unrestricted movement; can be used snowmobiling and off-roading

2862189 | Black | S-3XL

B. TEKVEST® SUPERSPORT

Proven and popular, the Supersport delivers the fullest protection along with all-season versatility and comfort. Its zip-on/off fleece collar adds comfort and coverage in cold weather.

SHELL: Strong, protective UHMW panels cover shoulders

FIT: Adjustable belt across lower back ensures proper fit

SAFETY: Optional quick-attach shoulder pads available for upper arm coverage

ADDITIONAL FEATURES: Zip-off fleece collar diffuses rising body heat to reduce fogging; large arm openings for unrestricted movement; drop-tail design for extended coverage; 2-stage pockets; can be used snowmobiling and off-roading

2862190 | Black | S-3XL

C. YOUTH TEKVEST®

This comfortable, size-adjustable Youth TekVest® provides young riders (70-100 lbs.) with valuable upper body protection.

SHELL: Strong, protective UHMW panels cover shoulders

FIT: Adjustable side straps and arm straps

SAFETY: Shoulder pads are included for upper arm protection

2862191 | Youth

D. TEKVEST® SHOULDER PADS

· Quick-attach shoulder pads allow for upper arm coverage

2862192 | S-3XL

SIZING CHARTS

MEN'S JACKET AND BIB SIZING

Size	Chest	Waist	Hips	Sleeve*	Inseam	Size Code
Small	35-38	31-33	35-37	33	32	02
Medium	38-41	33-35	37-40	34	32.5	03
Large	41-45	35-38	40-43	35	33	06
X-Large	45-48	38-42	43-47	36	33.5	09
2X-Large	48-52	42-45	47-50	37	34	12
3X-Large	52-58	45-52	50-56	38	34	14
4X-Large	58-65	52-61	56-63	39	35	15
5X-Large	65-70	61-63	63-68	40	35	16
Med Tall	38-41	33-35	37-40	36	35.5	05
Large Tall	41-45	35-38	40-43	37	36	08
XL Tall	45-48	38-42	43-47	38	36.5	11
2XL Tall	48-52	42-45	47-50	39	37	—

WOMEN'S JACKET AND BIB SIZING

Size	Chest	Waist	Hips	Sleeve*	Inseam	Size Code
Small	34-36	24-27	34-37	30	30.5	02
Medium	36-38	27-29	37-40	31	30.5	03
Large	38-40	29-33	40-43	32	31	06
X-Large	40-42	33-36	43-46	32.5	31	09
2X-Large	42-44	36-40	46-49	33	31	12

YOUTH JACKET AND BIB SIZING

Size	Height	Chest	Waist	Hips	Sleeve*	Inseam	Size Code
X-Small	41-46	22-24	19-21	23-26	22	21	01
Small	46-52	24-27	21-24	26-29	24	22.5	02
Medium	52-58	27-30	24-26	29-32	27	26.5	03
Large	58-64	30-33	26-28	32-35	30	29.5	06
X-Large	64-67	33-36	28-30	35-37	33	32.5	09

ADULT HELMET SIZE CONVERSIONS

Size	Hat Size	Inches	Metric	Size Code
X-Small	6.75	21.25	54	01
Small	6.875-7	21.625-22	55-56	02
Medium	7.125-7.25	22.375-22.75	57-58	03
Large	7-7.5	23.125-23.625	59-60	06
X-Large	7.625-7.75	24-24.375	61-62	09
2X-Large	7.875-8	24.75-25.125	63-64	12
3X-Large	8	25-26	65	14

YOUTH HELMET SIZE CONVERSIONS

Size	Circumference	Metric	Size Code
Adjustable	Fits S-L	51-54	00
Small	20.375	51	02
Medium	20.875	53	03
Large	21.375	55	06

* Measure sleeve length from center back neck



LATITUDE: 40.189365 LONGITUDE: -111.269531

24°F (-4.4°C), WIND NW AT 7 MPH (0 KM/H), 95% HUMIDITY, TUESDAY 2:52 PM



LISTEN. REFINE. OPTIMIZE. REPEAT.

AT POLARIS®, ENGINEERING NEVER STOPS.

When engineering is done well, when design is dialed-in down to the smallest detail, it's always easy to notice. But it makes a world of difference. Lines are cleaner. Angles are tighter. The package is complete. For the Polaris Engineered™ team, fine-tuning accessories for seamless integration is what it's all about.

"The entire team is working together and integrating our processes," says Steve Eastman, Vice President of PG&A. "We're working further up front between the design of the vehicle and the accessories that go with that vehicle."

Solutions that look seamless on the surface are nice, but they're not certified as Polaris Engineered™ or even ready to touch a snowflake until they've been put through their paces, time and time again.

From testing different UV ray exposures on various materials, beating on bumpers in the workroom, listening to riders and getting out and riding on their own time — Polaris® Engineers never stop listening and never stop refining.

"We build, we test thoroughly, and we listen to riders after a product is out there," says Dan, Senior Product Leader for snowmobile accessories. "That means both customers and dealers see an improved fit, finish, ease of installation and an overall better product with every new release."

The Polaris® team knows that hard work, harder testing and endless innovating is key to making solutions that optimize any ride.

"We make the best products in power sports and that's a real tribute to the superiority of our engineering and the emphasis that we have on integration, innovation and quality," says Eastman.



A NEW ERA OF INTEGRATION.

THE AXYS™ CHASSIS EPITOMIZES POLARIS INNOVATION™ AND SEAMLESS INTEGRATION. WHEN I FIRST HEAR THAT ENGINE COME TO LIFE, I KNOW POLARIS® HAS BUILT A SLED WITH ME IN MIND. AXYS™ MAKES MY SLED REVOLUTIONARY, BUT MY MACHINE ISN'T MINE UNTIL IT'S TRICKED OUT WITH EVERY ACCESSORY I NEED FOR THE PERFECT RIDE.

STYLE AND FIT

Unmatched ease of installation and modular design means easily fine-tuning a machine that embodies the perfect balance of fashion and function.

ELEVATED CUSTOMIZATION

The AXYS™ platform gives me every opportunity to create a custom sled. With more mounting points, updated colorways and brand new parts; optimizing my machine is easier than ever.

SEAMLESS DESIGN

Polaris® purposely designs and tests their sleds and accessories in tandem. When adding any solution to an AXYS™ chassis seamless integration is a given, not an afterthought.

RUSH®

AXYS™ makes trail domination effortless. The new AXYS™ chassis on a Rush® sled makes adding anything and everything easy and seamless to cap off the complete riding experience.

- A. Polaris® AXYS™ PRO-FIT Sport Rack
- B. Polaris® AXYS™ PRO-FIT Rear Sport Rack Bag
- C. Polaris® AXYS™ PRO-FIT Heated Windshield Bag, Low Pro
- D. AXYS™ Extreme Front Bumper, Red
- E. AXYS™ RUSH® and SWITCHBACK® Rear Bumper
- F. AXYS™ Extreme Skid Plate, Red
- G. AXYS™ Low Windshield, Red



SWITCHBACK® ADVENTURE®

Adventure® riders know that a day trip often turns into much more. With AXYS™, added storage and seating in an integrated package answers the call of any extended excursion.

- A. AXYS™ X2 Seat
- B. AXYS™ X2 Seat Backrest
- C. Switchback® Cargo Rack Saddlebags
- D. Polaris® AXYS™ PRO-FIT Rear Sport Rack Bag
- E. Polaris® AXYS™ PRO-FIT Handlebar Bag



SWITCHBACK®

The most versatile machine now has a chassis to reflect its rider's desires. AXYS™ Platform integration means a smarter ride whether you're hitting the trail or taking it to the mountain.

- A. Polaris® AXYS™ PRO-FIT Cargo Rack
- B. Polaris® AXYS™ PRO-FIT Rack Bag
- C. Polaris® AXYS™ PRO-FIT Underseat Journey Bag
- D. Polaris® AXYS™ PRO-FIT Handlebar Bag



STORAGE



EVERYTHING ON AND IN MY MACHINE IS EXACTLY WHERE I WANT IT. I CAN GO FURTHER, BRING MORE AND DO MORE. I LOOK FORWARD TO WHAT'S AROUND EVERY FROZEN BEND AND NEVER LOOK BACK. WITH POLARIS ENGINEERED™ STORAGE MY ENTIRE RIDING SYSTEM CONFORMS TO ME.

Modularity

Modular design and purposely-placed mount points make customizing effortless. Mix and match storage components to build a sled tailored to any of your needs.

Functionality

Polaris® engineers create solutions for better rides. Adding parts like the heated windshield bag maximize your entire experience.



Impeccable Integration

We engineer storage parts side by side with sleds. Perfect sizes, clean fits and sleek lines define the Polaris® difference.

- A. Polaris® AXYS™ PRO-FIT Cargo Rack, page 44
- B. Polaris® AXYS™ PRO-FIT Rack Bag, page 44
- C. AXYS™ Ultimate Front Bumper, Red, page 54

STORAGE: AXYS™ PLATFORM



POLARIS® AXYS™ PRO-FIT CARGO RACK **NEW**

This easy-to-add Polaris® AXYS™ PRO-FIT Cargo Rack is a convenient, roomy cargo solution designed specifically for your Polaris® AXYS™ Switchback. This rack can be securely installed in minutes at the tail of the snowmobile. Enhance the rack's versatility by adding the Polaris® AXYS™ PRO-FIT Rack Bag (2880376; sold separately).

MATERIAL: Strong, durable aluminum construction
ATTACHMENT: Easy bolt-on installation; all mounting hardware included

2880205 | Aluminum

2880205-458 | Matte Black
AXYS™ SWITCHBACK®



POLARIS® AXYS™ PRO-FIT RACK BAG **NEW**

Using innovative, Polaris®-exclusive Lock & Ride® technology, the Polaris® AXYS™ PRO-FIT Rack Bag installs quickly and easily without tools in the cargo rack.

FITS: All AXYS™ Switchback® models with AXYS™ Polaris® PRO-FIT Cargo Rack
MATERIAL: Compression molded semi-rigid material
ATTACHMENT: Bag installs in seconds using Lock & Ride® technology; no tools required

2880376

AXYS™ SWITCHBACK® WITH CARGO RACK, SWITCHBACK® ADVENTURE™

AXYS™ PRO-FIT Cargo Rack Bag cannot be used with AXYS™ X2 Backrest (2880377); for storage with backrest installed, use Water-Resistant Rear Rack Bag (2878731)



POLARIS® AXYS™ PRO-FIT SPORT RACK **NEW**

Adding this innovative Polaris® AXYS™ PRO-FIT Sport Rack gives your sled a versatile cargo-carrying solution. This strong, durable rack mounts easily and lets a rider add the Polaris® AXYS™ PRO-FIT Sport Rack Bag (2880371; sold separately). The Sport Rack can remain on the sled when the bag is removed.

ATTACHMENT: Easy bolt-on installation; all mounting hardware included

2880363-458 | Matte Black
AXYS™ SWITCHBACK®

2880362-458 | Matte Black
AXYS™ RUSH®



POLARIS® AXYS™ PRO-FIT HANDLEBAR BAG **NEW**

Add a convenient, secure cargo solution to your Polaris AXYS™ snowmobile by installing this Polaris® AXYS™ PRO-FIT Handlebar Bag. It mounts in seconds over the handlebar using durable straps with Velcro®, and it has two zippered compartments that keep small items conveniently close at hand as you ride.

MATERIAL: Compression molded semi-rigid material and Velcro®

ATTACHMENT: Bag fits over bar and straps securely into place with Velcro®

2880443 | Black
AXYS™



POLARIS® AXYS™ PRO-FIT HEATED WINDSHIELD BAG **NEW**

This innovative storage solution uses heat from the engine compartment to warm and dry goggles and gloves.

MATERIAL: Compression molded semi-rigid material
ATTACHMENT: Bag installs inside base of windshield using Tuflok® fasteners; mounting hardware included

2880374 | Large

Does not fit with low windshield

2880481 | Low Pro
AXYS™

For use with low windshield



POLARIS® AXYS™ PRO-FIT UNDERSEAT JOURNEY BAG **NEW**

This innovative Polaris® AXYS™ PRO-FIT Underseat Journey Bag integrates into the sled design and attaches securely in minutes without tools at the rear of the seat providing storage in a center cargo compartment and two side compartments like compact saddlebags.

MATERIAL: Compression molded semi-rigid material
ATTACHMENT: Front of bag attaches behind seat using Tuflok® fasteners; bag also attaches to AXYS™ Cargo Rack with Velcro® straps; mounting hardware included

2880372 | Black
AXYS™ SWITCHBACK®

Requires Polaris® AXYS™ PRO-FIT Cargo Rack (2880205 or 2880205-458; sold separately)

Does not work with Switchback® Cargo Rack Saddle Bags (2878720)



POLARIS® AXYS™ PRO-FIT REAR SPORT RACK BAG **NEW**

This Polaris® AXYS™ PRO-FIT Sport Rack Bag attaches securely in minutes without tools atop the strong Polaris® AXYS™ PRO-FIT Sport Rack (sold separately). Integrated styling makes the bag look like part of the sled, and it provides weatherproof storage you'll appreciate while riding.

MATERIAL: Compression molded semi-rigid material
ATTACHMENT: Base of bag attaches to rack; front of bag attaches behind seat using Tuflok® fasteners; mounting hardware included

2880371 | Black

AXYS™

Requires Polaris® AXYS™ PRO-FIT Sport Rack (2880362-458 for RUSH® models; 2880363-458 for Switchback® models; sold separately)



POLARIS® AXYS™ PRO-FIT REAR SEAT BAG **NEW**

This Polaris® AXYS™ PRO-FIT Rear Seat Bag installs in seconds without tools, utilizing Polaris-exclusive Lock & Ride® technology.

MATERIAL: Compression molded semi-rigid material
ATTACHMENT: Front of bag attaches behind seat using Tuflok® fasteners; mounting hardware included

2880370 | Black

AXYS™



POLARIS® AXYS™ PRO-FIT UNDERSEAT ESSENTIALS BAG **NEW**

This innovative Polaris® AXYS™ PRO-FIT Underseat Essentials Bag integrates into the sled design and attaches securely in minutes without tools at the rear of the seat. It's smaller than the journey bag and is ideal for carrying goggles, gloves, a water bottle and other similarly sized items.

MATERIAL: Compression molded semi-rigid material
ATTACHMENT: Front of bag attaches behind seat using Tuflok® fasteners; mounting hardware included

2880373 | Black
AXYS™ SWITCHBACK

Requires Polaris® AXYS™ PRO-FIT Cargo Rack (2880205 or 2880205-458; sold separately)

CHOOSE THE ULTIMATE STORAGE PACKAGE SPECIFICALLY FOR YOUR SLED ON THE AXYS™ PLATFORM. OR MIX AND MATCH STORAGE COMPONENTS TO FIT YOUR CUSTOM NEEDS.



AXYS™ ULTIMATE RUSH® STORAGE **NEW**

2859440

INCLUDES:
2880362-458
Polaris® AXYS™ PRO-FIT Sport Rack
2880371
Polaris® AXYS™ PRO-FIT Sport Rack Bag
2880443
Polaris® AXYS™ PRO-FIT Handlebar Bag



AXYS™ ULTIMATE SWITCHBACK® STORAGE **NEW**

2859441

INCLUDES:
2880205-458
Polaris® AXYS™ PRO-FIT Cargo Rack, Black
2880376
Polaris® AXYS™ PRO-FIT Rear Rack Bag
2880372
Polaris® AXYS™ PRO-FIT Rear Underseat Journey Bag
2880374
Polaris® AXYS™ PRO-FIT Heated Windshield Bag



AXYS™ ULTIMATE SWITCHBACK® ADVENTURE STORAGE **NEW**

2859442

INCLUDES:
2880376
Polaris® AXYS™ PRO-FIT Rear Rack Bag
2880373
Polaris® AXYS™ PRO-FIT Rear Underseat Essentials Bag
2880443
Polaris® AXYS™ PRO-FIT Handlebar Bag
2880374
Polaris® AXYS™ PRO-FIT Heated Windshield Bag

STORAGE: RMK®



BURANDT LOCK & RIDE® FLYER BAG

Leading backcountry rider Chris Burandt and storage expert Ogio® developed this lightweight Flyer Bag that installs on a tunnel in seconds and provides convenient, protected storage space.

MATERIAL: Durable black ballistic nylon with water-resistant coating

ATTACHMENT: Lock & Ride® technology: Install or remove the bag in seconds without tools; installs securely in tunnel's T-slots

CAPACITY: 1800 cu. in.

2879722
ALL RMK®, RMK® ASSAULT®, ASSAULT® SWITCHBACK®, 144" INDY®, VOYAGEUR



BURANDT LOCK & RIDE® TUNNEL BAG

Developed in conjunction with leading back country rider Chris Burandt and storage expert Ogio®, this Tunnel Bag provides riders with exactly the cargo space needed, and it is Lock & Ride®. This bag has space for survival gear as well as a protective, padded space where food can be stored, and a waterproof section for items such as electronics.

MATERIAL: Ballistic nylon and Truck tarpaulin

ATTACHMENT: Lock & Ride® technology: Install or remove the bag in seconds without tools; installs securely in tunnel's T-slots

CAPACITY: 2500 cu. in.

ADDITIONAL FEATURES: Bag has integrated backpack straps for easy transport when it's off the sled. Lock & Ride® technology: Install or remove the bag in seconds without tools

2879086
'11-15 PRO-RIDE® RMK®, '11-15 SWITCHBACK® ASSAULT®, ALL RMK®, 144 VOYAGEUR



SEMI-RIGID TUNNEL BAG

Newly redesigned for a better fit and features, the Semi-Rigid Tunnel Bag will keep your belongings dry all day.

MATERIAL: Heavy-duty nylon

ATTACHMENT: Mounts quickly and easily on the sled's tunnel

CAPACITY: Bag dimensions are 24" x 14" x 8", approximately 1.5 cu. ft.

ADDITIONAL FEATURES: Water-resistant construction to protect contents

2878732
'11-15 RMK®, ASSAULT®, INDY® 144, VOYAGEUR, 07-11 IQ®
2878736 | 121" Tunnel Bag
121", '13 INDY®
2878737 | 136" Tunnel Bag
136"



FUEL CAN RACK

MATERIAL: Lightweight aluminum construction

ATTACHMENT: Fastens to integrated T-slots

CAPACITY: Fits up to 8.5" x 12" fuel can

ADDITIONAL FEATURES: Fuel can sold separately, not offered through Polaris®

2876765
11-15 PRO-RIDE® RMK® RACK, '11-15 SWITCHBACK® ASSAULT®, VOYAGEUR, INDY® 144



LOCK & RIDE® ADJUSTABLE FUEL CAN RACK

This Lock & Ride® Adjustable Fuel Can Rack installs on the tunnel and securely holds all the most popular 2.5-gallon (U.S.) fuel cans.

- Carrier installs quickly and easily in tunnel's T-slots
- Easy-adjust strap securely holds wide variety of can shapes
- No tools required to adjust strap

2879790 | Aluminum
ALL RMK®, ASSAULT® RMK®, SWITCHBACK® ASSAULT®, INDY® 144, VOYAGEUR
2879790-458 | Matte Black
ALL RMK®, ASSAULT® RMK®, SWITCHBACK® ASSAULT®, INDY® 144, VOYAGEUR



ULTIMATE DEFROST BAG

With this PRO-RIDE® Defrost Bag installed, the instrumentation is repositioned for easier visibility when the rider is standing, and the heated bag is an ideal place to store items such as goggles and gloves. It uses engine heat to keep small cargo warm and dry and to defrost goggles.

MATERIAL: Durable 1,680-denier black ballistic nylon with a water-resistant coating

ATTACHMENT: Aluminum external bracket support

CAPACITY: 464 cu. in.

ADDITIONAL FEATURES: Zippered compartment and side mesh venting

2879090 | '10-14 PRO-RIDE®*
* Excludes Indy® and Voyageur



RMK® UNDERSEAT BAG

MATERIAL: 1000-denier black nylon

ATTACHMENT: Self-adhesive Velcro®

CAPACITY: 500 cu. in.

ADDITIONAL FEATURES: Water-resistant construction to protect contents, includes zippered Insert Bag that holds cargo inside Underseat Bag for additional protection

2876427
11-15 PRO-RIDE® RMK®, '13 144" RMK®, '11-15 SWITCHBACK® ASSAULT®



PRO-RIDE® UNDERSEAT BAG

MATERIAL: Durable 1000D nylon with water-resistant coating

ATTACHMENT: Specifically designed to fit under seat (except RMK® 600 144"). Bag attaches with Velcro® to seat support

CAPACITY: 364 cu. in. with a 216 cu. in. expandable section

ADDITIONAL FEATURES: Bag is elevated off the tunnel for improved water resistance

2879087
ALL PRO-RIDE® RMK®, INDY®, SWITCHBACK® ASSAULT®, VOYAGEUR

WATER-RESISTANT UNDERSEAT BAG LINER

2878733
Requires RMK® Underseat Bag (2876427)



RMK® SHOVEL BAG

MATERIAL: 1680-denier black/gray ballistic nylon

ATTACHMENT: Easy bolt-on installation

CAPACITY: 600 cu. in.

ADDITIONAL FEATURES: Holds shovel head, handle, gear

2876015
'07-11 IQ® RMK®, '11-15 PRO-RIDE® RMK®, ASSAULT®, '11-15 SWITCHBACK® ASSAULT®, VOYAGEUR



RMK® RISER BAG

MATERIAL: 1680-denier polyester/600-denier polyester

ATTACHMENT: Straps on in seconds, no drilling; fits both post and Pro-Taper® bars, fits 125mm and 5.25" risers

CAPACITY: 285 cu. in.

ADDITIONAL FEATURES: Zippered pockets

2878187
Requires Pro-Taper® Handlebars



EXTREME PRO-TAPER® RISER BAG

This weatherproof bag straps around the handlebar riser of models equipped with the Pro-Taper® handlebar in seconds and conveniently holds small items.

MATERIAL: Durable 1000-denier black nylon base; rip-stop accents

CAPACITY: 180 cu. in.

ADDITIONAL FEATURES: Clear vinyl map pocket; includes cable port for iPod®/MP3 headphone cord

2879663
RMK®, PRO RMK®, SWITCHBACK® ASSAULT®, ASSAULT® RMK®
Requires Pro-Taper® Handlebars



UNDERHOOD BAG

MATERIAL: Heavy-duty nylon

ATTACHMENT: Multiple straps mount the bag under the hood above the exhaust

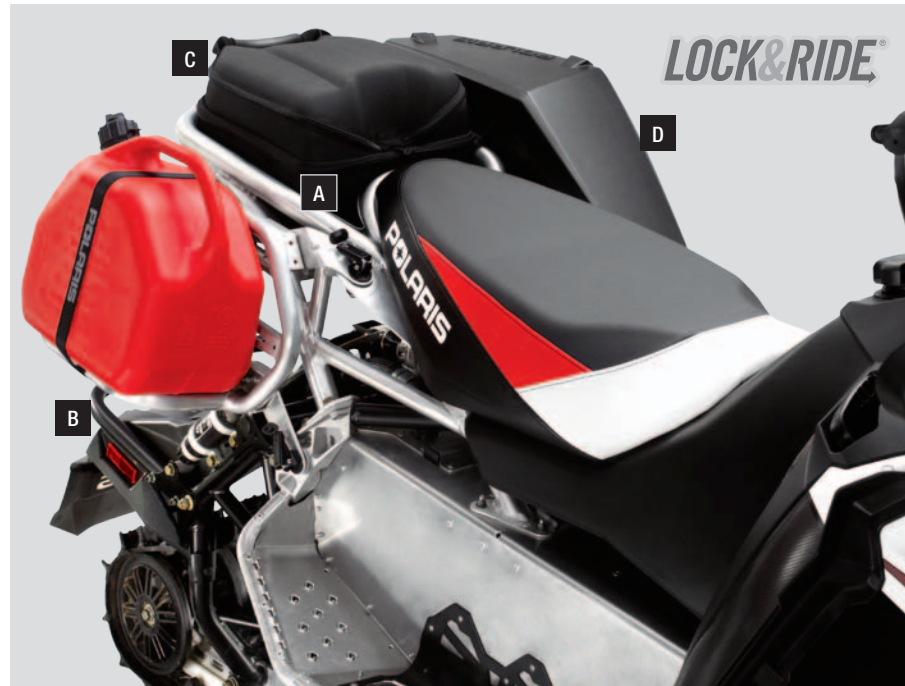
CAPACITY: Bag dimensions are 7" x 10" x 3", approximately 210 cu. in.

ADDITIONAL FEATURES: Holds a pair of gloves, goggles, etc., so they can be warmed and dried by engine heat

2878735
Requires Pro-Taper® Handlebars

CUSTOMIZE YOUR POLARIS® RIDE ONLINE
BUILDMYSLED.COM

STORAGE: PRO-RIDE® PLATFORM



A. SWITCHBACK® CARGO RACK

Enhance the cargo capacity of a PRO-RIDE® Switchback® model with this Cargo Rack that provides the foundation for the Adventure Cargo System™.

MATERIAL: Aluminum
ATTACHMENT: All mounting hardware is included
CAPACITY: 45 lbs.

2879803 | Aluminum
*12-14 PRO-RIDE® 136" SWITCHBACK®

2879803-458 | Matte Black
*12-14 PRO-RIDE® 136" SWITCHBACK®

B. LOCK & RIDE® UNIVERSAL CARRIER

This Lock & Ride® Universal Carrier installs in place of a Lock & Ride® Saddlebag and provides a secure platform and structure to which a wide variety of cargo can be attached.

MATERIAL: Durable, lightweight aluminum construction
ATTACHMENT: Lock & Ride® technology; install or remove carrier in seconds without tools
CAPACITY: 15 lbs.

- Rack structure has numerous pre-drilled holes for securing tie-downs and bungees
- Can be used to carry fuel can, fishing gear, snowboards, bags or other items
- Includes all mounting hardware and instructions
- Can be used on left or right side

2879153
AXYS™, AXYS™ SWITCHBACK® ADVENTURE, 550 INDY® ADVENTURE
Requires Switchback® Cargo Rack (2879803 or 2879803-458)

Gas can not included

C. SWITCHBACK® WATER-RESISTANT REAR RACK BAG

MATERIAL: Compression-molded plastic
ATTACHMENT: Mounts using Lock & Ride® technology into Aluminum Cargo Rack (2878721; required and sold separately)
CAPACITY: Bag measures 10" x 11" x 8", approximately 880 cu. in.

ADDITIONAL FEATURES: Zippered closure, zippered expansion panel for increased cargo capacity, grab handle on top for easy carrying to and from sled
2878731
*12-14 SWITCHBACK®, INDY® WITH ACCESSORY CARGO RACK, 550/600/800 ADVENTURE

D. SWITCHBACK® CARGO RACK SADDLEBAGS

MATERIAL: Injection-molded polyester
ATTACHMENT: Uses Lock & Ride® technology to install on the sides of the Switchback® Cargo Rack (2879803 or 2879803-458; required and sold separately)
CAPACITY: 966 cu. in. per bag; 1,932 cu. in. total (1.1 cu. ft.)
ADDITIONAL FEATURES: Each bag has a water-resistant removable liner that holds cargo, lids latch securely and open to provide full access to the entire saddle bag

2878720
*12-14 SWITCHBACK®, SADDLEBAGS AND LINERS AND AXYS™ SWITCHBACK®
Requires Cargo Rack (2880205 or 2880205-458)

2879738 | Voyageur
550 INDY® ADVENTURE
Requires Voyageur Cargo Rack (2879846)

E-F. RUSH® LUGGAGE RACK AND RACK BAG

MATERIAL: Bag features semi-rigid construction for durability and durable steel rack construction

ATTACHMENT: Bag straps on in seconds, no drilling; two large buckles make it easy to secure the bag in place
CAPACITY: 1,450 cu. in. in one main compartment
ADDITIONAL FEATURES: Dual carrying handles for easy carrying to and from the sled; buckles are large enough to be opened and closed easily with gloves on

E. 2878795-458 | Luggage Rack
*12-14 RUSH®,

F. 2877798 | Luggage Rack Bag
*12-14 RUSH®
Requires Luggage Rack (2878795-458)



RUSH® SADDLE AND TRUNK BAG

MATERIAL: 1,000-denier black nylon base, ripstop accents
ATTACHMENT: Straps on in seconds, no drilling
CAPACITY: 920 cu. in.
ADDITIONAL FEATURES: Side pockets on trunk bag features multiple compartments

2877800
*10-14 RUSH®, *12-14 SWITCHBACK®



EXTREME RISER BAG

MATERIAL: 1,000-denier black nylon base, ripstop accents
CAPACITY: 160 cu. in.
2879659
RUSH®, SWITCHBACK®, SWITCHBACK® ADVENTURE®, INCLUDES INDY® AND VOYAGEUR



PRO-RIDE® TANK BAG

MATERIAL: Strong, durable 1,680-denier black ballistic nylon
ATTACHMENT: Bag fits over fuel fill neck and attaches via straps to sled's frame
CAPACITY: Bag dimensions are 6" x 6" x 9", approximately 324 cu. in.
ADDITIONAL FEATURES: Zippered compartment and side mesh pockets

2878734
*12-15 SWITCHBACK®



PRO-RIDE® RUSH® RISER BAG

MATERIAL: 1,000-denier black nylon base, ripstop accents
ATTACHMENT: Straps on in seconds, no drilling
CAPACITY: 160 cu. in.
ADDITIONAL FEATURES: Clear vinyl map pocket; hole for iPod®/MP3 headphone cord

2877795
*10-14 RUSH®, *12-14 SWITCHBACK®, *11-15 SWITCHBACK® ASSAULT®, INDY®



PRO-RIDE® WINDSHIELD BAG

Keep compact items in view and close at hand with this Polaris®-branded bag that mounts inside the base of the windshield.

MATERIAL: Rugged, durable 1,680-denier black polyester
ATTACHMENT: Installs in seconds using friction fit and Velcro®
CAPACITY: 270 cu. in. / 4.4 liters

2879166
PRO-RIDE®, INDY®, VOYAGEUR

*Models with Mid, Chrome RMK®, Tall or Extra tall windshields



LOW PRO DEFROST BAG

- Provides a warm, dry place to carry a spare pair of goggles or light gloves
- Works with any windshield on a PRO-RIDE® model
- Zippered compartment and side mesh venting

MATERIAL: Durable 1,680-denier black ballistic nylon with a water-resistant coating
ATTACHMENT: Aluminum external bracket support

ADDITIONAL FEATURES: Works with any windshield on a PRO-RIDE® model

2879721 | Round Gage
*13-15 INDY®, VOYAGEUR

2879789 | Square Gage
*10-14 PRO-RIDE®, RUSH®, SWITCHBACK®, RMK®



DOWNLOAD OUR FREE
POLARIS® SNOW APPAREL &
ACCESSORIES CATALOG APP

Browse the latest apparel,
accessories, videos and links

STORAGE: INDY®/VOYAGEUR



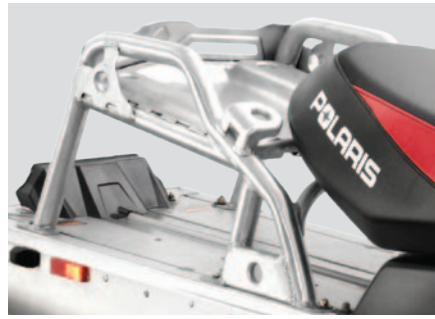
VOYAGEUR 155" EXTREME REAR RACK **NEW**

This rack allows anything from firewood to fishing equipment to be secured for reliable transport. For enhanced cargo carrying, add the accessory Voyageur 155" Extreme Rear Rack Liner (sold separately).

MATERIAL: Strong, durable tubular construction
ATTACHMENT: Easy bolt-on installation

2880275

550 INDY® VOYAGEUR 155"



ADVENTURE CARGO RACK

This cargo rack installs in place of the stock rack, offers numerous tie-down points to secure cargo and will hold a wide variety of large cargo storage, including the Lock & Ride® Convertible Passenger Seat (2879839).

MATERIAL: Aluminum

ATTACHMENT: Installs securely with 6 fasteners into tunnel's T-slots

- Stock rack can be attached as extension to Tunnel Rack to carry additional cargo
- Mounting hardware and instructions included

2879846 | Brushed Aluminum
VOYAGEUR 550 144", INDY® 144", ASSAULT®, SWITCHBACK®



A-B. VOYAGEUR 2-UP TOURING CARGO RACK AND BAGS

Enhance the cargo capacity of a Voyageur with this Cargo Rack that provides a secure place to insert and strap down a cargo bag (sold separately).

MATERIAL: 1,000-denier black/grey nylon, semi-rigid construction.

ATTACHMENT: T-slots in tunnel and carriage bolts ensure secure installation; all mounting hardware is included

A. 2878156 | Cargo Rack

RMK®, '11-15 SWITCHBACK® ASSAULT®

B. 2878158 | Touring Cargo Rack Bag
LXT, VOYAGEUR

C. 2879842 | Under Rack Bag
550 INDY® VOYAGEUR

*Standard on Voyageur



VOYAGEUR 155" EXTREME REAR RACK LINER **NEW**

Riders whose 550 Indy® Voyageur 155 is equipped with the Voyageur 155" Extreme Rear Rack (2880275; sold separately) can add this rack liner and carry gear in the most secure fashion. This durable liner installs easily and fits perfectly.

MATERIAL: Strong, durable plastic

FITS: Designed specifically for the Voyageur 155" Extreme Rear Rack (2880275; sold separately)

ATTACHMENT: Installs quickly and easily

ADDITIONAL FEATURES: Helps protect and hold cargo securely in the rack

2880478 | Black

550 INDY® VOYAGEUR 155"



INDY® ALUMINUM CARGO RACK

MATERIAL: Sturdy, durable brushed aluminum

ATTACHMENT: All mounting hardware is included

CAPACITY: 15 lbs.

ADDITIONAL FEATURES: Provides a convenient cargo solution for an Indy® rider, and it's designed to accept the Lock & Ride® Switchback® Adventure™ Rear Rack Bag (2878731; sold separately)

2879164 | Brushed Aluminum

'13-15 INDY®

2879164-458 | Matte Black

'13-15 INDY®



TOURING 2-UP BAG

MATERIAL: 600-denier black polyester, highly UV stable

ATTACHMENT: Webbing and J-channel with carrying handle

CAPACITY: 1,099 cu. in.

2875964 | Rear Touring Bag

600 LXT, EDGE®

SEATS

AXYS™ X2 PASSENGER SEAT SYSTEM

AXYS™ X2 PASSENGER SEAT **NEW**

INSTALLATION: Installs quick and easy; mounting hardware and heavier rear spring included

OPTIMIZE ITS VERSATILITY: Add the AXYS™ X2 Seat Backrest (2880377) and Water-Resistant Rear Rack Bag (2878731); each sold separately

2880378

AXYS™ SWITCHBACK™, AXYS™ SWITCHBACK® ADVENTURE™

*Requires Cargo Rack (2880205 or 2880205-458)

AXYS™ X2 SEAT BACKREST **NEW**

Enhance passenger comfort by adding this AXYS™ X2 Seat Backrest.

INSTALLATION: Backrest installs in seconds using Lock & Ride® technology

2880377

AXYS™ SWITCHBACK™, AXYS™ X2 SEAT (2880378)

*Requires Cargo Rack (2880205 or 2880205-458)

Does not work with the Polaris® AXYS™ PRO-FIT Cargo Rack Bag (2880376)

AXYS™ X2 SEAT BAGS **NEW**

2880376 | Polaris® AXYS™ PRO-FIT Cargo

Rack Bag

AXYS™ SWITCHBACK™ AND SWITCHBACK® ADVENTURE™

*Requires Cargo Rack (2880205 or 2880205-458)

Cannot use with AXYS™ X2 Backrest (2880377)

2878731 | Water-Resistant Rear Rack Bag

AXYS™ SWITCHBACK™, SWITCHBACK® ADVENTURE™

*Requires Cargo Rack (2880205 or 2880205-458)

For use with AXYS™ X2 Passenger Seat (2880378) and AXYS™ X2 Seat Backrest (2880377)



LOCK & RIDE® CONVERTIBLE PASSENGER SEAT SYSTEM



LOCK & RIDE® CONVERTIBLE PASSENGER SEAT

- Accommodates passenger and cargo up to 150 lbs/68 kg
- Seat installs on Cargo Rack that is standard on Adventure; (2879803 or 2879803-458; sold separately) required on Switchback® models for installation

- Available seat accessories (each sold separately) include: Lock & Ride® Convertible Passenger Seat Backrest (2879841), Lock & Ride® Convertible Passenger Seat Bag (2879805), and Heater Grips for Lock & Ride® Convertible Passenger Seat System (2879840)

2879839 | Passenger Seat
SWITCHBACK® WITH ACCESSORY RACK, 600/800 ADVENTURE

2879840 | Heated Grips

2879841 | Passenger Seat Backrest

2880338 | Retrofit Kit for '14 SnowCheck

Switchbacks

2879918 | Retrofit Kit for '12 and '13 Switchback®

Adventure



LOCK & RIDE® CONVERTIBLE PASSENGER SEAT BAG

This Lock & Ride® Convertible Passenger Seat Bag provides Switchback® and Voyageur owners using the accessory Lock & Ride® Convertible Passenger Seat with a convenient, protected cargo carrier.

MATERIAL: Durable black ballistic nylon with water-resistant coating

ATTACHMENT: Installs quickly and easily in cargo rack behind the Lock & Ride® Convertible Passenger Seat; multiple zippered compartments

2879804

SWITCHBACK® 136, ADVENTURE

2879805

ADVENTURE 550 X2



2-UP TOURING KIT

Enhance a passenger's comfort with this 2-Up Touring Kit. **ADDITIONAL FEATURES:** Includes long 2-up seat with grab handles and passenger backrest. 2-up kit is limited for casual riding with a youth passenger. Heavier torsion springs are available for ride tuning with adult passenger

2878157 | 2-Up Seat
SWITCHBACK® 136" (EXCEPT 2008 SWITCHBACK™), VOYAGEUR,
INDY 144" WITH RACK

2880273 | **NEW** Cut & Sewn 2-Up Seat
RMK® 144"

2878201 | Passenger Handwarmer Kit
VOYAGEUR

Requires Voyageur 2-Up Touring Cargo Rack (2878156) or Voyageur 155" Extreme Rear Rack (2880275); both sold separately

CUSTOMIZE YOUR POLARIS® RIDE ONLINE
BUILDMYSLED.COM

PROTECTION & STYLE



AXYS™ ULTIMATE FRONT BUMPER **NEW**

Install this Brushed AXYS™ Ultimate Front Bumper on a Polaris® AXYS™ snowmobile and you instantly add the fullest front-end protection as well as color-matched custom style. It includes a strong tubular bumper as well as durable framework extending downward for additional protection. The bumper installs easily and protects the sled's nose and belly pan.

MATERIAL: Strong, durable and protective tubular construction

ATTACHMENT: Installs in place of the stock bumper; includes all mounting hardware

2880206-293 | Red

2880206 | Brushed

2880206-458 | Matte Black

2880206-133 | White

AXYS™



PRO-RIDE® ULTIMATE FRONT BUMPER

This durable Front Bumper provides outstanding front-end protection from hazards encountered during backcountry riding and boondocking.

MATERIAL: Aluminum

ATTACHMENT: Easy bolt-on installation; all mounting hardware included; replaces stock bumper

· Protects the nose of the sled and the front heat exchanger

2879727-133 | White

2879727 | Aluminum

2879727-458 | Matte Black

2879727-589 | Orange

ALL PRO-RIDE® INCLUDING INDY®, VOYAGEUR



AXYS™ EXTREME FRONT BUMPER **NEW**

Install this Brushed AXYS™ Extreme Front Bumper on a Polaris® AXYS™ snowmobile and you instantly add color-matched custom style and outstanding front-end protection. The bumper installs easily and provides enhanced protection for the nose of the sled.

MATERIAL: Strong, durable and protective tubular construction

ATTACHMENT: Installs in place of the stock bumper; includes all mounting hardware

2880381-458 | Matte Black

2880381 | Brushed

2880381-133 | White

2880381-293 | Red

AXYS™



PRO-RIDE® EXTREME ALUMINUM FRONT BUMPER

· More stout than the stock bumper, provides additional protection

· Strong, lightweight aluminum

· All mounting hardware included

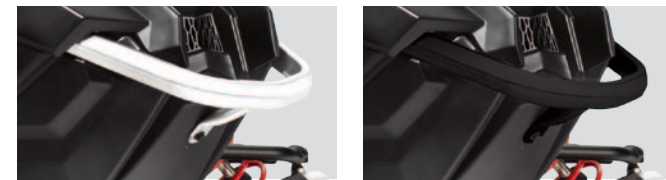
2878688-589 | Orange

2878688 | Aluminum

2878688-458 | Matte Black

2878688-133 | White

ALL PRO-RIDE® INCLUDES INDY®, VOYAGEUR



AXYS™ FRONT BUMPER **NEW**

A Polaris® rider can add color-matched custom style and outstanding front-end protection with these front bumpers. The bumper installs easily and provides enhanced protection for the front of the sled.

MATERIAL: Strong, durable and protective tubular construction; durable, fade-free powder-coated finish

INSTALLATION: Installs in place of the stock bumper; does not include hardware

2880486-293 | Red

2880486-133 | White

2880486-458 | Matte Black

AXYS™



PRO-RIDE® EXTREME REAR BUMPER

This strong, lightweight aluminum Extreme RMK® Rear Bumper is an outstanding value that gives a sled a custom look and provides reliable protection for the rear of the tunnel.

MATERIAL: Aluminum

ATTACHMENT: Replaces stock rear bumper and mounts to sides of tunnel

· Mounting hardware and instructions included

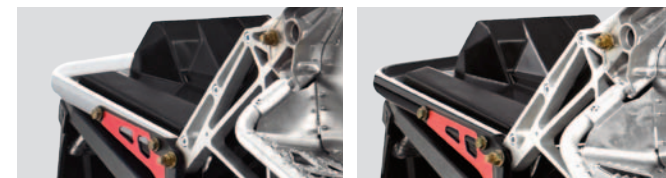
2879726 | Aluminum

2879726-458 | Matte Black

2879726-133 | White

2879726-589 | Orange

ALL RMK® AND ASSAULT® RMK®



REAR BUMPERS **NEW**

A Polaris® rider can add color-matched custom style and outstanding rear-end protection with these rear bumpers. The bumper installs easily and provides enhanced protection for the tail of the sled.

MATERIAL: Strong, durable and protective tubular construction; durable, fade-free powder-coated finish

INSTALLATION: Installs in place of the stock bumper; does not include hardware

AXYS™ RUSH® AND SWITCHBACK® REAR BUMPER

2880382-293 | Red

2880382-133 | White

2880382-458 | Matte Black

AXYS™

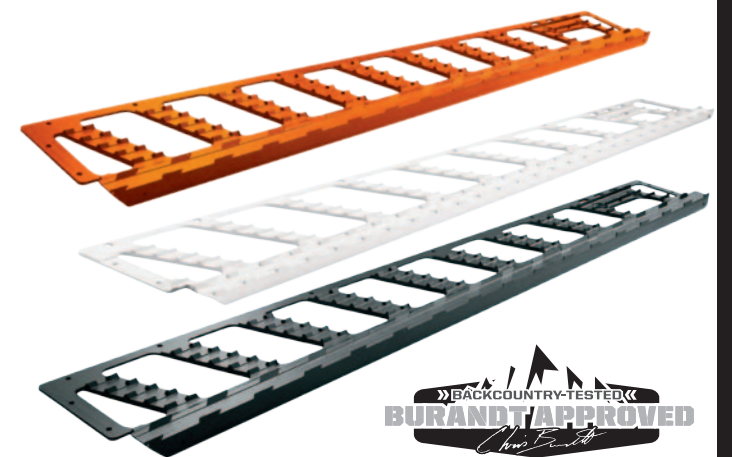
PRO-RIDE® INDY® REAR BUMPERS

2880341-293 | Red

2880341-458 | Matte Black

2880341-133 | White

INDY®



BURANDT'S HD POWDERTRAC® BOARDS

Strong, durable Burandt's HD PowderTrac® Boards let extreme riders take their riding to the next level. These beefy extruded aluminum running boards provide the greatest strength made of 6061-T6. They provide a rider with secure footing the full length of the boards during extreme riding.

· Extruded aluminum design with a machined profile

· Secure front and rear attachment with castings that are adhesive bonded

· Designed for quick snow evacuation and to prevent ice build-up

· Removable and serviceable running board assembly

2879091 | Black | Pair

2879091-133 | White | Pair

2879091-589 | **NEW** | Orange | Pair

11-15 PRO RMK® 155-163"

PRO-RIDE® HEAT EXCHANGER GUARD

· Protects the front heat exchanger

· Strong, lightweight aluminum

· Powder-coated black wrinkle finish

· All mounting hardware included

2878119

*11-14 RUSH®, *12-14 SWITCHBACK®*

* Will not fit with PRO-RIDE™ skid plates



PROTECTION & STYLE



AXYS™ EXTREME SKID PLATE **NEW**

- Protects suspension, bulkhead from impact
- Made of strong ¼" UHMW plastic
- Adds color and a customized look
- Fits all AXYS™ models
- Includes all necessary mounting hardware

2880384-070 | Black

2880384-133 | White

2880384-293 | Red

AXYS™

AXYS™ ULTIMATE SKID PLATE **NEW**

- Full-coverage style protects suspension, bulkhead from impact
- Made of strong ¼" UHMW plastic
- Adds color and a customized look
- Fits all AXYS™ models
- Includes all necessary mounting hardware

2880383-070 | Black

2880383-133 | White

2880383-293 | Red

AXYS™

PRO-RIDE® SKID PLATES

- Protects suspension, bulkhead from impact
- Made of strong ¼" UHMW plastic
- Adds color and a customized look
- RMK®-style fits RMK® and Switchback® Assault® models
- Includes all necessary mounting hardware

2877793-293 | Red

'10-14 RUSH™ '12-14 SWITCHBACK™

2877793-070 | Black

'10-14 RUSH™, '12-14 SWITCHBACK™

2877793-133 | White

'10-14 RUSH™, '12-14 SWITCHBACK™

2878155-293 | Red

'11-15 PRO-RIDE® RMK®, SWITCHBACK™ ASSAULT®, INDY®

2878155-070 | Black

'11-15 PRO-RIDE® RMK®, SWITCHBACK™ ASSAULT®, INDY®

2878155-133 | White

'11-15 PRO-RIDE® RMK®, INDY®

IQ® SKID PLATES

2876985-293 | Red

'09-13 IQ® SKID PLATE

2876985-070 | Black

'09-13 IQ® SKID PLATE

2876985-570 | Matte White

'09-13 IQ® SKID PLATE

Limited quantities



PRO-RIDE® RMK® TUNNEL REINFORCEMENTS

- Strong, durable, lightweight 0.1" thick aluminum
- Powder-coated black wrinkle finish
- Maintains running board angle during rough riding
- All mounting hardware included

2878178

'11-'13 PRO RMK®, '11-'15 RMK™



KNEE PADS

- Protects knees from impact against the console
- 3/8" thick foam
- 3M™ adhesive backing for premium adhesion

2878195 | Black

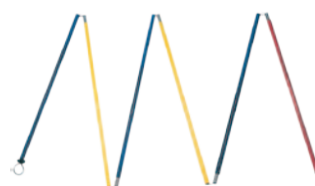
PRO-RIDE™ RUSH®, SWITCHBACK™ '13-15 INDY®, VOYAGEUR



SNOW SHOVELS

2874915 | 3' Expandable Shovel | Black

2875094 | Shovel with Saw | Red



240 CM AVALANCHE PROBE

- Sturdy, lightweight aluminum
- 40 cm. long folded

2874916 | Avalanche Probe



ABS POLARIS® AVALANCHE PACK

- Avalanche airbag is designed to minimize excavation time by preventing burial or minimizing burial depth
- A compact compressed-air cylinder stored inside the pack provides fast, reliable airbag inflation
- Reusable for multiple inflations; compressed-air cylinder can be refilled or exchanged
- Pack provides generous storage space for essentials such as survival gear, food, tools, water bottles, etc.
- Comfortable, secure shoulder and torso straps
- Canisters and handles are not included, sold and distributed by ABS

2879088 | ABS Polaris® Avalanche Pack



POLARIS® / OGIO® MOUNTAIN BACKPACK

MATERIAL: Durable nylon

ATTACHMENT: Adjustable padded shoulder straps and a sternum strap

CAPACITY: 2,075 cu. in.

ADDITIONAL FEATURES: Ergonomic design for most comfortable fit; waterproof zippers

2878744 | Mountain Backpack



SNOBUNJE® RATTLER

- Stretch cord bundled in a corrugated vinyl tube
- Hook attaches to ski, use handle to pull

2874420 | Deep Snow Extrusion Device

HANDLEBAR ACCESSORIES & MIRRORS



POLARIS® LOCK & RIDE® HANDGUARDS AND MOUNTS

Strong, durable handguards install easily and provide outstanding protection for a rider's hands in all conditions. Handguards block wind, snow, ice, branches, etc. Mounts sold separately.

MATERIAL: Durable, impact-resistant plastic

FITMENT: Not compatible with 12"-20" windshields

ATTACHMENT: Mounts required; sold separately

ADDITIONAL FEATURES: Added wind/snow protection, sold in pairs

2879192 | Handguard | Black

2879193 | Handguard | Red

2879194 | Handguard | White

2879154 | Straight Mount

2879190 | Pro-Taper® Mount

2880404 | Replacement Kit



PRO-TAPER® NARROW 6 INCH RISE BARS

This handlebar used by Polaris® backcountry expert Chris Burandt is narrower and has a 5" rise, which is 2" lower than the standard deep snow bar. It provides a comfortable riding position, lower center of gravity, and confidence-inspiring steering leverage.

MATERIAL: Heat-treated aircraft aluminum; provides superior strength and resists bending

ATTACHMENT: Kit includes handlebar, pad, and heated handgrips; everything is included for easy Plug & Play installation; bar fits into stock 7/8" handlebar clamps

- Pre-drilled holes for stud-mounted mountain bar
- Bar hooks can be bolted on easily (not included)

2880331 | Black

ALL PRO-RIDE®, INCLUDING INDY®, VOYAGEUR



UNIVERSAL FORMED HANDLEBAR GAUNTLETS

Riders' and passengers' hands will be well protected by these stylish Formed Handlebar Gauntlets, which can be installed on the handlebar grips or passenger grab handles.

MATERIAL: Durable, protective exterior with insert that can be removed

ATTACHMENT: Gauntlet slides over handgrip; adjustable strap with Velcro® secures it in place

- Branded with the Polaris® logo

2879796 | Black/Grey Universal Formed

FITS ALL HANDLEBARS, PASSENGER HANDGRIPS, INCLUDING

LOCK & RIDE™ CONVERTIBLE PASSENGER SEAT SYSTEM

2879155 | Handlebar Gauntlets | Pair

UNIVERSAL FIT, HANDLEBAR GAUNTLETS*

Also fits Touring passenger handles



AXYS™ MIRRORS **NEW**

- Wide-angle view for good visibility, non-fogging glass
- Folding design for use with cover
- Custom-designed, integrated hood mount style
- Includes all hardware

2880292 | Pair

AXYS™



HANDLEBAR RISER / ALUMINUM

2876266 | IQ®, RMK®, Indy®, Voyageur 5.25" Handlebar Riser*

2876265 | IQ®, RMK®, Indy®, Voyageur 3.75" Handlebar Riser*

2876264 | IQ®, RMK®, Indy®, Voyageur 2.38" Handlebar Riser*

Does not work with AXYS™ platform



HOOD MOUNT MIRRORS

- Wide-angle view for good visibility, non-fogging glass
- Folding design for use with cover
- Custom-designed, integrated hood mount style
- Includes all hardware

2877803 | Pair

ALL PRO-RIDE® INCLUDES '13-15 INDY®, VOYAGEUR



HANDLEBAR MIRRORS

- Installs to any IQ® or PRO-RIDE® handlebar
- Can be used with stock handlebar pad

2876297 | Pair

INSTALLS TO ANY IQ® OR PRO-RIDE™



DUAL PIVOT MIRROR FOR IQ®

- Non-fogging glass, wide-angle view
- Hood mounted, dual pivot design for fully adjustable positioning
- Fits with covers

2878634 | Pair

IQ®

WRAPS

POLARIS® HELPS ME MAKE MY MARK. WITH CUSTOM GRAPHIC WRAPS MY MACHINE MATCHES MY STYLE AND MY ENTIRE RIDE IS A WORK OF ART.



HOW TO ORDER

1. CHOOSE YOUR WRAP STYLE AND COLOR
2. CHOOSE YOUR HOOD AND SIDE PANEL
3. CHOOSE YOUR TANK AND TUNNEL LENGTH

XXX represents track length. Add your track length to the end of the ordering part number.
 Example: Track length = 155: For Burandt Fracture wrap, color Orange, your tank and tunnel part number would be 2858018-155
 AVAILABLE TRACK LENGTHS: 155", 163"



POLARIS® DECALS
 Show your Polaris® pride on your trailer, truck or fridge!
 2851012-01 | Polaris® Decal 14" x 2" | White

COLOR	HOOD AND SIDE PANEL	TANK AND TUNNEL
BURANDT MACHETE WRAP <small>NEW</small>		
	2858032-293	2858039-XXX
	2858032-581	2858040-XXX
	2858032-589	2858038-XXX
	2858032-619	2858037-XXX
BURANDT RIPCORD WRAP <small>NEW</small>		
	2858033-293	2858043-XXX
	2858033-581	2858044-XXX
	2858033-589	2858042-XXX
	2858033-619	2858041-XXX
KEITH CURTIS KC711 ASYLUM WRAP <small>NEW</small>		
	2858034-293	2858047-XXX
	2858034-581	2858048-XXX
	2858034-589	2858046-XXX
	2858034-619	2858045-XXX
KEITH CURTIS KC711 DOMINATION WRAP <small>NEW</small>		
	2858035-293	2858051-XXX
	2858035-581	2858052-XXX
	2858035-589	2858050-XXX
	2858035-619	2858049-XXX
POLARIS® BLADE WRAP <small>NEW</small>		
	2858036-293	2858055-XXX
	2858036-581	2858056-XXX
	2858036-589	2858054-XXX
	2858036-619	2858053-XXX

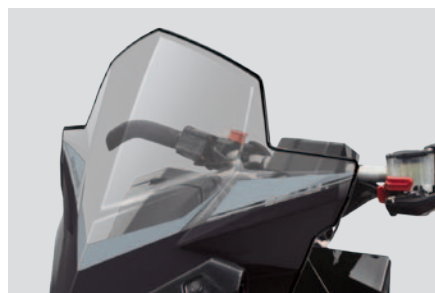


WIND PROTECTION

THERE'S NOTHING BETTER THAN SEEING A CLEAR TRAIL AHEAD. POLARIS® INNOVATION LETS ME CUT THROUGH THE WIND AND DOMINATE MY TERRAIN EVERY SECOND OF THE RIDE.



AXYS™ EXTRA TALL WINDSHIELD **NEW**
HEIGHT: 24" tall to provide the ultimate in protection
MATERIAL: Optical-grade polycarbonate; durable construction, 20% thicker than the stock windshield
ATTACHMENT: Installs quickly and easily in place of stock windshield; uses stock mounting hardware
2880395 | Smoke
AXYS™



AXYS™ TALL WINDSHIELD **NEW**
HEIGHT: 20" tall to provide outstanding protection
MATERIAL: Optical-grade polycarbonate; durable construction, 20% thicker than the stock windshield
ATTACHMENT: Installs quickly and easily in place of stock windshield; uses stock mounting hardware
2880394 | Smoke
120/137



PRO-RIDE® WIND DEFLECTORS
MATERIAL: Rubber
ATTACHMENT: Adhesive backing for easy install
ADDITIONAL FEATURES: Flared edge is extremely effective at deflecting wind, snow and ice away from the rider so the rider remains warmer and more comfortable
2878723
ALL PRO-RIDE®, INDY®, VOYAGEUR



EXTRA WIDE TALL WINDSHIELD
This Extra Wide Tall Windshield provides the broadest protection so wind, snow and ice are directed well wide of, or over, the rider. Integrated vents reduce buffering.
HEIGHT: 24" tall for ultimate wind protection
MATERIAL: 20% thicker than stock windshield
INSTALLATION: Installs with six fasteners
ATTACHMENT: Installs with six fasteners
ADDITIONAL FEATURES: Light smoke finish with silkscreen
2879156
ALL PRO-RIDE®, INDY®, VOYAGEUR



WIDE WINDSHIELD
This Wide Windshield provides broad protection so wind, snow and ice are directed well wide of the rider.
HEIGHT: 20" tall for ultimate wind protection
MATERIAL: 20% thicker than stock windshield
INSTALLATION: Installs with six fasteners
ADDITIONAL FEATURES: Light smoke finish with silkscreen
2878512
ALL PRO-RIDE®, INDY®, VOYAGEUR



BURANDT SIGNATURE WINDSHIELD
This Burandt-inspired Windshield features styling by backcountry riding expert Chris Burandt with custom Chris Burandt™ graphics.
HEIGHT: 12" tall for a stylish look
MATERIAL: Screen-printed polycarbonate
ATTACHMENT: Installs with six fasteners
ADDITIONAL FEATURES: Low-mid height windshield provides protection against wind, snow and brush. Graphics include Chris Burandt's signature and backcountry logo
2879098
ALL PRO-RIDE®, INDY®, VOYAGEUR

AXYS™ MID WINDSHIELD **NEW**
HEIGHT: 18.5" tall to provide outstanding protection
MATERIAL: Optical-grade polycarbonate; durable construction, 20% thicker than the stock windshield
ATTACHMENT: Installs quickly and easily in place of stock windshield; uses stock mounting hardware
2880389 | Smoke
2880390 | Black
2880391 | White
2880392 | Red
AXYS™



AXYS™ LOW WINDSHIELD **NEW**
HEIGHT: 7" tall for a low-profile look
MATERIAL: Optical-grade polycarbonate; durable construction, 20% thicker than the stock windshield
ATTACHMENT: Installs quickly and easily in place of stock windshield; uses stock mounting hardware
2880385 | Black
2880386 | White
2880387 | Red
AXYS™
Works with Low Pro Heated Windshield Bag (2880481)



PRO-RIDE® MID WINDSHIELD
HEIGHT: 14.5" tall with top lip for added wind protection
MATERIAL: 20% thicker than stock windshield
ATTACHMENT: Installs with eight fasteners
ADDITIONAL FEATURES: Smoke finish with silkscreen
2879828 | Matte Black
2879829 | White Gloss
2877840 | Chrome
ALL RMK®, ASSAULT™
2877841 | Clear
ALL PRO-RIDE®, INDY®, VOYAGEUR



PRO-RIDE® LOW WINDSHIELD
HEIGHT: 7" tall, creates a lower profile
MATERIAL: 20% thicker than stock windshield
ATTACHMENT: Installs with six fasteners
ADDITIONAL FEATURES: Gives your sled a custom look
2877804 | Low Chrome
2878779 | Low Black
2879097 | Low White
2879099 | Low Red
2879100 | Low White/Retro
2879101 | Low Orange
ALL PRO-RIDE®, INDY®, VOYAGEUR



PERFORMANCE



This kit was developed, tested, and tuned by the Pros, for the Pros.
— Chris Burandt

CHRIS BURANDT™ SIGNATURE SERIES

BURANDT™ FOX® RMK® SHOCKS **NEW**

Take your riding to a world-class level with the performance and adjustability of the new Chris Burandt™ Signature Series FLOAT 3 EVOL R ski shocks and FLOAT 3 and FLOAT 3 EVOL R rear skid shocks. The application-specific "Burandt" calibration will soak up moguls and chatter bumps on your way "to and from" that perfect riding area, without sacrifices made on roll-in turning, deep snow capabilities and sled transfer onto the top of the snow.

- High-flow velocity-sensitive damping: Custom-tuned specifically for the Pro RMK®
- Samurai Sealing System: Specifically designed from a special low-temperature, highly durable material that scrapes away snow, ice and debris while keeping the seals lubricated for minimal friction
- Factory Series Genuine Kashima Coat: The distinctive gold color is backed by its high-performance properties that provide reduced friction, an exceptionally smooth feel and extreme durability.
- FLOAT technology allows infinitely adjustable main chamber air spring rates for your riding style and terrain
- EVOL air chamber gives you the ability to adjust bottom-out resistance and roll stiffness without compromising plushness
- Extremely Lightweight

2880487 | FLOAT 3 EVOL R Front Ski Shocks

RMK®

2880488 | FLOAT 3 and FLOAT 3 EVOL R FOX® Rear Skid Shocks

RMK®



PRO-RIDE® HOT AIR ELIMINATION VENT KITS

- Allow heat from resonator and clutch to flow out of engine compartment
- Hydrophobic screen material is water repellent and blocks water ingestion
- Benefits include enhanced performance, reduced belt wear (from lowered underhood temperature) and reduced stagnant underhood hot air
- All mounting hardware included; requires cutting
- For race applications only

2878181 | Hood Vents

2878454 | Side Panel Vents

2878453 | Lower Fender Vents

ALL PRO-RIDE®

2880477 | **NEW** AXYS™ Hot Air Elimination Vent Kit AXYS™



ROX® ADJUSTABLE BAR RISER

- Aluminum construction
- Tool-less adjustability
- Adjust your handlebar from 4" to 6" height

2878740

'10-14 RUSH®, '12-14 SWITCHBACK®

Does not work with AXYS™ platform

Mountain Bar



MOUNTAIN BAR

- More control for deep snow and sidehilling
- 14" long with universal mounts
- Raised Polaris® logo
- Includes all necessary mounting hardware

2877456-070

ALL EXCEPT PRO-TAPER®

HANDLEBAR HOOKS

- For aggressive and mountain riding
- Comfortable molding plastic; warmer than metal hooks
- Does not fit with Pro-Taper® handlebars

2872482-070 | Short 45" | Black | Each



REAR OUTER WHEEL KIT

- Necessary for studding track
- Comes complete with wheels, bearings and hardware for a three wheel axle assembly

2876337

'08-14 IQ® SHIFT®, INDY®

Will not fit Voyageur



RMK® BOGIE WHEEL KIT

- RMK® riders can enhance the ride and performance of their sleds with the installation of this RMK® Bogie Wheel Kit
- Expands the distribution of weight for a smoother, more balanced ride in all conditions
- Wheels install on the stock skid

2878251

'11-15 PRO-RMK®



ICE SCRATCHERS

- Fasten to rails to throw ice chips into suspension
- Drag in snow, lubricating hi-fax
- Allow removal of wheels equivalent to 4 lbs.

2876256

RMK®, PRO-RIDE®, ASSAULT®



SNOW FLAPS

- Durable, impact-resistant plastic
- Shields from kicked-up snow and ice
- Fits all IQ® models
- Includes all necessary mounting hardware

2875078-293 | Red
IQ® SNOWFLAP



ADJUSTABLE PERFORMANCE SHOCKS

Walker Evans™ NEEDLE SHOCKS WITH COMPRESSION ADJUSTMENT

Premium shocks with external compression and remote reservoirs offer the best in tunability and fade-proof performance.

Unique needle design uses hydraulic force at the end of the stroke to minimize harsh bottoming.



WALKER EVANS™ CLICKER IFS PIGGYBACK SHOCKS **NEW**

2880474 | Aluminum

2880475 | Aluminum | Rear

RMK®

WALKER EVANS™ CLICKER TRACK SHOCKS **NEW**

2880476 | Aluminum | Front

RMK®



WALKER EVANS™ CR IFS SHOCKS

- High-performance trail shocks that offer a wide range of adjustment, from extremely compliant for trail chatter to very aggressive for big hits
- Compression and rebound adjustment
- External compression adjustment offers wide range for all riding styles
- Springs included

2878738 | Pair

'12-14 RUSH®, '12-15 SWITCHBACK® ASSAULT®, '12-14 SWITCHBACK®

**POLARIS®
INNOVATION**

TECHNOLOGY AT YOUR FINGERTIPS FOR YOUR COMFORT, CONVENIENCE AND SAFETY. BECOME FULLY CONNECTED TO YOUR MACHINE — BECOME FULLY CONNECTED TO YOUR RIDE — EVERY STEP OF THE WAY.

POLARIS® INTERACTIVE DIGITAL DISPLAY NEW

Simple and seamless – Polaris® has developed the first of its kind; this display will put you at the center of your riding experience in a whole new way.

- 4.3" high resolution, full-color, LCD digital display
- Smartphone connectivity* via Bluetooth™ displays text message and missed call indicator, phone battery life and cell signal strength
- Diagnostics screen displays vehicle fault codes, descriptions and suggested actions to resolve issues
- Vehicle Immobilizer and security function allow you to lock your vehicle with a passcode
- GPS Connectivity offers exact location information including elevation, latitude/longitude, compass bearings as well as recording your route so you can find trails again

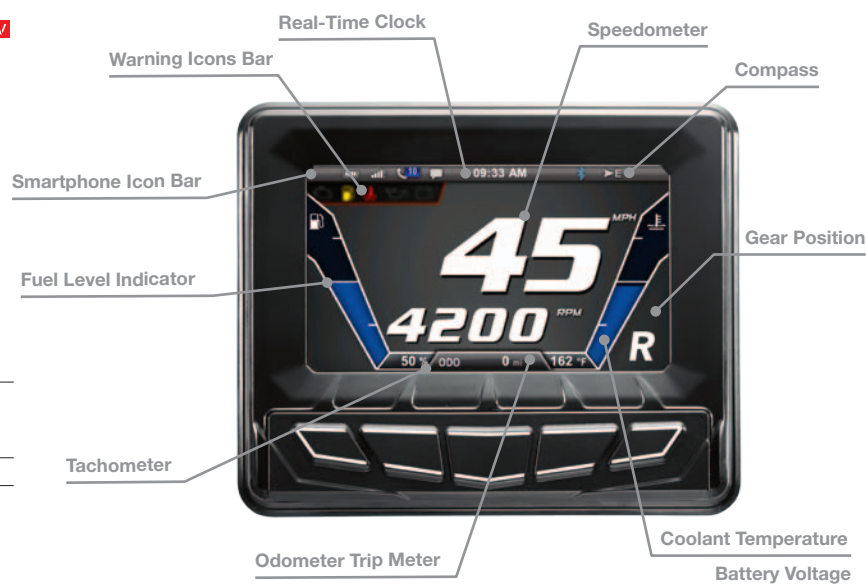
2880402
‘15 AXYS™, ‘10-15 PRO-RIDE
Must order install kit with display, see below based on sled

2880493 | AXYS™ Install Kit

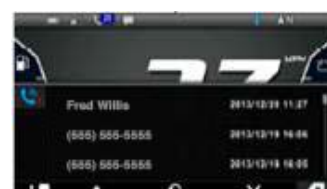
2880495 | PRO-RIDE® Install Kit**

*Full functionality requires compatible Bluetooth® Smartphones

**Requires Ultimate Defrost Bag (2879090) or Low Pro Defrost Bag (2879789)



Plan and record your route so you can find trails again



Check missed calls and text messages without pulling out your phone



Diagnostics screen displays fault codes and suggested actions to take

POLARIS® LINK NEW POWERED BY RIDERX™

Become integrated into your riding experience with the Polaris® Link, powered by RiderX™. The wireless link easily plugs into your vehicle to record diagnostics and information. The data is transferred wirelessly via Bluetooth™ to your cellular device where you review with your RiderX™ mobile application.*

Polaris Link supplies data to your phone wirelessly from your machine including:

- Real-Time Gauge with speed, RPM and average miles per gallon
- Vehicle Statistics including fuel rate, battery voltage and engine hours
- Vehicle Diagnostics that display error codes and preferred dealer communication

2879855

ALL PRO-RIDE®, ALL AXYS™

*Full functionality requires compatible Bluetooth® Smartphones



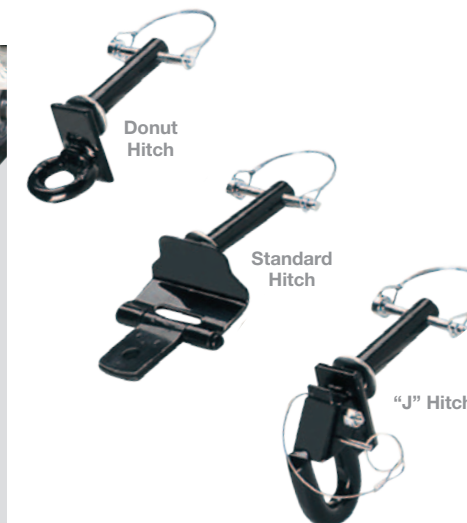
To download the RiderX™ app

TEXT SN01



TO **82350**

UTILITY



RECEIVER HITCHES

- Receiver style hitch
- Accepts following tow hitches: "J" Hitch, Standard Hitch, Donut Hitch

2880369-458 | NEW

AXYS™

2878683

PRO-RIDE® HITCH, '10-14 RUSH®, '12-15 SWITCHBACK®

2876562

'05-11 IQ® '121"-136" HITCH, '11-13 550 LXT

2878344

'07-11 IQ® RMK® HITCH, '11-15 PRO-RIDE® RMK®, VOYAGEUR

2879236

INDY® HITCH

2876059

'07-15 IQ® TOURING HITCH, TURBO / 600 LXT

2875118

'11-15 SWITCHBACK® ASSAULT®, '05-06 IQ® RMK® 144"-151"

KEY-OPERATED ELECTRIC START KITS

The ultimate convenience feature you can add to your sled.

- Easier to use and more consistent than pull starts
- Nice for extreme cold conditions
- Electric Start Kits do not include batteries

2880396 | NEW

AXYS™

2877257

'08-12 IQ® 600/700/800 CLEANFIRE®

Limited quantity available

2878796

'09-13 IQ® 550

Limited quantity available

2879330

ALL PRO-RIDE®, INCLUDES 600 INDY®/VOYAGEUR

Requires Battery (4013045)

2879833

VOYAGEUR 550, INDY® 550

4013045 | Battery

4011496 | Battery

RECEIVER HITCH DRAW BARS

- Safety lock pin
- Heavy-duty steel rod hook
- Durable e-coat and black powder-coated finish
- Mounting lock pin for added safety
- "J" Hitch features a safe spring-loaded lock plate
- Donut Hitch receives up to 1" ropes, wires or tow hooks

2876677 | Standard Hitch*

2874449 | Donut Hitch*

2879838 | Heavy-Duty "J" Hitch

* Requires Receiver

CUSTOMIZE YOUR POLARIS® RIDE ONLINE
BUILDMYSLD.COM

ADDITIONAL ACCESSORIES

A. TIE DOWN STRAPS

Reliable high-test tie down straps secure sleds quickly and confidently.

2871181 | 2 Pack | Black

B. BIG WHEEL SNOW DOLLIES

Move that sled around the garage with ease.

2856656 | Red

C-D. 12 VOLT AND RCA PLUGS

• 12v accessory plug in 12-volt outlet, great for GPS or phone, dash mount

• RCA adapter allows you to plug in a heated face shield

• RCA Power Plug includes all hardware required to add an RCA outlet

C. 2878475 | All PRO-RIDE®, IQ®, 12V

D. 2878227 | All PRO-RIDE®, IQ®, RCA Adapter

2878780 | All PRO-RIDE®, IQ®, RCA Power Plug

BLOCK HEATER

2411109 | 110V Battery Heater — FS®/FST™

TETHER SWITCH

2874379

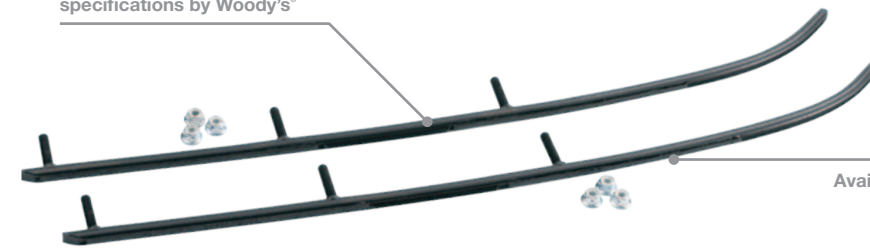


SKIS & TRACTION

MY SLED IS NOTHING WITHOUT ITS SKIS. POLARIS® INNOVATION KEEPS MY SKIS AND TRACTION SEAMLESSLY INTEGRATED AND LETS ME SLICE THROUGH ANYTHING THE TERRAIN HAS TO OFFER.



Precision-built to machine specifications by Woody's®



Available with 3" to 8" of carbide in 60°, 75° and 90° styles



SKIS FIT ALL POLARIS® SLEDS

A. GRIPPER SKI

- The standard in deep snow performance.
 - Deeper upper and lower keel design allows for the best performing ski in loose and hard-packed snow conditions
 - Integrated traction on top of ski for superior grip
 - Deep, 1½" keel for positive steering in loose snow
 - Large, forward biased rocker for reduced steering effort
 - Wide, 6¾" ski for increased flotation
 - Includes ski toe and hardware; carbide skags required (sold separately) — see chart
- 2877679-293 | Red | Each
2877679-570 | White | Each
2877679-070 | Black | Each
'11-15 RMK®, '11-15 SWITCHBACK® ASSAULT®, AXYS™

B. PRO-STEER™ SKI

- The Pro-Steer™ Ski features a reshaped keel and shortened skag for reduced steering effort
 - Redesigned ribs atop the ski increase torsional stiffness for more precise steering
 - Bosses added atop the ribs provide traction to prevent slipping when stepping on the ski
 - Alternate ski stop may be required
 - Includes ski toe and hardware
- 2879152-293 | Red | Each
2879152-133 | White | Each
2879152-070 | Black | Each
PRO-RIDE®, AXYS™

C. POLARIS® IQ® RACE SKI (NOT SHOWN)

- The race-proven ski for aggressive cornering.
 - Factory race proven, aggressive 90° snocross keel
 - Provides improved control and better cornering, reduces darting
 - Wide tip for increased flotation
 - Includes ski hoop and hardware; carbide skags required (sold separately) — see chart
- 2900256-070 | Black | Each
IQ®

D. PRO FLOAT SKI **NEW**

- The design is adapted from the proven, effective PRO-STEER ski design
 - Each ski is 9.5" wide.
 - Provide 45% more off-trail flotation
- 2880482 | Black | Each
PRO-RIDE®, AXYS™

E. POLARIS® SKI HOOPS

- Fits all Polaris® composite skis for that customized sled look.
- 2876062-458 | **NEW** Matte Black | Pair
2876062-133 | **NEW** White | Pair
2876062-589 | **NEW** Orange | Pair
2876062-293 | Red | Pair
FITS ON GRIPPER, PRO-FLOAT, AND PRO-STEER™ SKIS



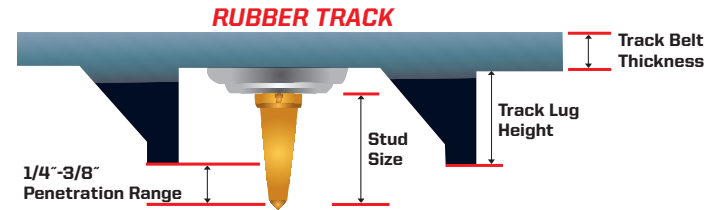
Ski Type	Note	Style	3" Carbide	4" Carbide	6" Carbide	8" Carbide
Pro-Steer™ Ski	MY12-15	60°	—	2879025	2879026	2879027
RUSH® Ski	MY10-11	60°	2878524	2875716	2875613	2875614
IQ2 Trak Ski	MY07-13	60°	2875954	2875612	2875613	2875614
IQ® Trak Ski	MY06-07 Fusion	60°	—	2875716	—	—
IQ® Trak Dual Ski	MY06-13	60°	2875431	2874852	2874853	—
Gripper Ski	MY07-15	60°	2875723	—	2877880	2877881
Sidehiller Ski	Pair	60°	2874334	2875146	2875147	—
Polaris® Race Ski	Pair	60°	—	2875142	2875143	2875145
Youth 120	Pair	60°	2870997	—	—	—
Steel Ski	Pair	60°	2870693	2871288	2871601	—
Saddleless and Composite Ski	Pair	60°	—	2871688	2871687	—
	Pair	90°	2872566	—	—	—
	EZ Steer (Composite Ski Only)	60°	2872412	—	—	—
	Accu-trak Dual Runners	60°	2875430	2874628	—	—

Accu-trak Dual Runners fit Saddleless Ski only and are sold as single wear bars.

SKIS & TRACTION

HOW TO GET PURE TRACTION ON ICE AND HARD-PACKED SNOW

Adding traction products to your sled improves acceleration, braking and steering control, especially on hard-packed snow and ice. The more aggressive a rider you are, the more traction you need. The key is to have the right balance of traction products on your track and skis.



- 1) Determine how to match your riding style and sled model to the correct number of studs, type of studs and stud pattern.
- 2) Determine the right type and length of turning carbides necessary to balance traction and optimize steering.
- 3) Make sure you have the necessary parts installed to prevent the studs from damaging your sled's tunnel and cooling system.

POLARIS® '14 STUDS AND WEAR STRIP FIT CHART

Model	Track	Track Length	Lug Height	Stud Size	Wear Strip Kit	Stud Quantity		
						Trail	Intermediate	Performance
550 IQ® LXT	5413318	15" X 136"	1"	1.075	2877687	108	144	162
550 Indy® LXT 144	5414190	15" X 144"	1"	1.075	2879831	108	144	162
550 Indy® LXT 144 INT	5414013	15" X 144"	1.352"	1.325/1.450	2879831	144	152	171
550 Indy® Adventure	5414013	15" X 144"	1.352"	1.325/1.450	2879831	144	152	171
550 IQ® Shift	5412281	15" X 121"	0.91"	1.075	2877744	96	144	162
550 IQ® Shift 136"	5411955	15" X 136"	1.25"	1.325	2877687	108	144	162
550 IQ® Shift 136" CANADA	2877378	15" X 136"	1.352"	1.325/1.450	2877687	108	144	162
550 Indy® 121	5412281	15" X 136"	1"	1.075	2879830	108	144	162
550 Indy® 144	5414013	15" X 144"	1.352"	1.325/1.450	2879831	144	152	171
550 Indy® Voyageur 144	5414014	15" X 144"	1.352"	1.325/1.450	2879831	144	152	171
550 Indy® Voyageur 155	5414902	15" X 155"	1.6	1.325/1.450	2879831	144	152	171
600 Indy® Voyageur 144	5414014	15" X 144"	1.352"	1.325/1.450	2879831	144	152	171
600 IQ® LXT	5413318	15" X 136"	1"	1.075	2875414	108	144	162
600/800 Indy®	5412281	15" X 121"	0.91"	1.075	2879212	96	144	162
600/800 Indy® SP	5413198	15" X 121"	1"	1.075	2879212	96	144	162
600/800 PRO-RIDE® Rush®	5413198	15" X 121"	1"	1.075	Standard*	96	144	162
600 PRO-RIDE® Rush® Pro-R	2875512	15" X 121"	1.25"	1.325	Standard*	96	144	162
600 PRO-RIDE® Switchback®	2875639	15" X 136"	1.25"	1.325	Standard*	108	144	162
600 PRO-RIDE® Switchback® Adventure™	2877678	15" X 136"	1.352"	1.325/1.450	Standard*	108	144	162
600 PRO-RIDE® Switchback® Pro-R	2877678	15" X 136"	1.352"	1.325/1.450	Standard*	108	144	162
800 PRO-RIDE® Rush®	5413198	15" X 121"	1"	1.075	Standard*	96	144	162
800 PRO-RIDE® Rush® Pro-R	2875512	15" X 121"	1.25"	1.325	Standard*	96	144	162
800 PRO-RIDE® Rush® Pro-R LE	2877377	15" X 121"	1.352"	1.325/1.450	Standard*	96	144	162
800 PRO-RIDE® Switchback®	2875639	15" X 136"	1.25"	1.325	Standard*	108	144	162
800 PRO-RIDE® Switchback® Pro-R	2877678	15" X 136"	1.352"	1.325/1.450	Standard*	108	144	162
800 Switchback® Assault®	5414013	15" X 144"	1.352"	1.325/1.450	2878161	144	152	171
Turbo IQ® LXT	5413318	15" X 136"	1"	1.075	2875414	108	144	162
600/800 AXYS™ Rush®	5414653	15" X 120"	1.25"	1.325	Standard	108	144	162
600/800 AXYS™ Rush®	5414894	15" X 120"	1.75"	Not recommended	NA			
600/800 AXYS™ Rush®	2877748	15" X 120"	1.352"	1.325	2880399*			
600/800 AXYS™ Switchback®	5414654	15" X 137"	1.25"	1.325	Standard	108	144	162
600/800 AXYS™ Switchback®	5414895	15" X 137"	1.75"	Not recommended	NA			
600/800 AXYS™ Switchback®	5413661	15" X 137"	1.352"	1.325	2880400*	108	144	162



GRIP STUD KIT

- 2876555 | 96 Pack | 1.325"
- 2876556 | 96 Pack | 1.075"
- 2876558 | 144 Pack | 1.075"
- 2876557 | 144—1.325" Studs, Backers, Marker, Drill Bit
- 2876556 | 96—1.075" Studs, Backers, Marker, Drill Bit
- 2879158 | 144 Pack | 1.45"
- 2876558 | 144—1.075" Studs, Backers, Marker, Drill Bit



96 PACK STUDS

- 2871415 | Traction Master® 5/16, 1.075" 96pk
- 2873139 | Traction Master® 5/16, 1.325" 96pk
- 2875155 | Signature Series 5/16, 1.075" 96pk
- 2875149 | Signature Series 5/16, 1.325" 96pk
- 2879161 | Signature Series 5/16, 1.45" 96pk

144 PACK STUDS

- 2873140 | Traction Master® 5/16, 1.075" 144pk
- 2873141 | Traction Master® 5/16, 1.175" 144pk
- 2873142 | Traction Master® 5/16, 1.325" 144pk
- 2879162 | Signature Series 5/16, 1.45" 144pk

Wear Strip Kit

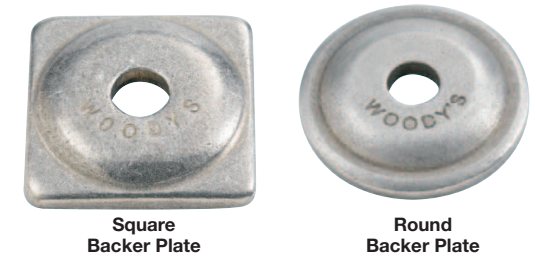


STUD PROTECTION/WEAR STRIP KITS

Protects tunnel when installing studs

- 2877687 | '08-12 121" IQ®, '08-14 IQ® Switchback 136", '10-12 IQ® LX, '11-15 550 LXT
- 2877744 | '09-13 550 Shift 121"
- 2875640 | M-10 Equipped Fusion®, Classic, IQ® LX 128"
- 2875414 | '06-13 IQ® Touring, Turbo LXT, 600 LXT
- 2874674 | EDGE® Touring and Transport
- 2874687 | Fusion® 121" Non M-10 '05-06, IQ® '07, '06-12 121" Turbo
- 2875415 | '05-07 IQ® Switchback®
- 2875029 | EDGE® Switchback®, '03 SKS
- 2879212 | '13-15 600/800 Indy®
- 2878532 | '10-11 RUSH®
- 2878161 | '11-15 Switchback® Assault®
- 2876837 | 600 RR
- 2879831 | 550 Indy® 144", Voyageur
- 2879830 | 550 Indy® 121"
- 2880399 | AXYS™ RUSH
- 2880400 | AXYS™ SWITCHBACK

Reference Team Tip S-11-10-02 when installing on '12-14 RUSH® and Switchback®



BACKER PLATES, ALUMINUM

- 2873153 | Square Backer Plate Aluminum—5/16 (96pk)
- 2871932 | Square Backer Plate Aluminum—5/16 (144pk)
- 2874324 | Round Backer Plate Aluminum—5/16 (24pk)
- 2874325 | Round Backer Plate Aluminum—5/16 (96pk)
- 2874329 | Round Backer Plate Aluminum—5/16 (1,000pk)

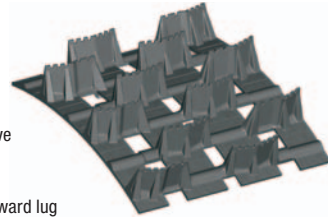
STUDDING TEMPLATES

- 2878247 | 2.86" Pitch Studding Template, Cardboard
- 2875157 | 2.52" Pitch Studding Template, Plastic

TRACKS

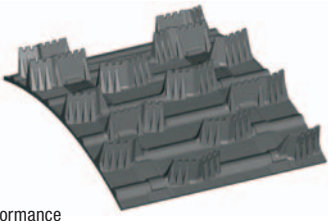
DEEP SNOW: SERIES 5.1 TRACK

- Industry-leading deep powder track; for 8T Drive sprockets, 2.86" pitch
- Available in 146", 155" and 163" lengths
- Optimized lug pattern producing 19% more forward lug contact compared to our Series 5.0 track
- Soft and flexible tips for superior performance in deep snow



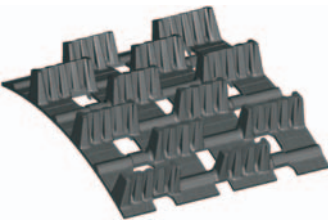
DEEP SNOW: SERIES 4.1 TRACK

- The standard in 2" deep snow tracks; for 9T Drive sprockets, 2.52" pitch
- Available in 144", 151", 159" and 166" lengths
- Equal parts versatility and durability
- Stiff lug base for long wear and hard-pack performance
- Soft and flexible tips for superior performance in deep snow



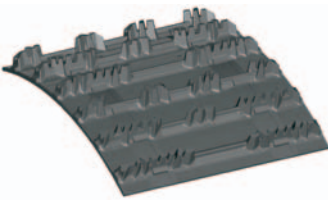
DEEP SNOW: COMPETITION TRACK

- The proven 2.125" hillclimb track
- Available in 146" and 155" lengths
- Hillclimb-specific pattern
- Stiff durometer construction for maximum traction in hard snow
- Pre-ported for better snow cleanout



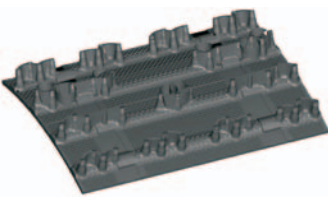
CROSSOVER: COBRA TRACK

- The trail track that puts more power to the snow. Excellent powder performance without compromising trail ride-ability
- Available in 120", 121", 136" and 146" lengths
- Rigid columns for good hard-pack capability
- Stepped columns and angled cutting edge enhance traction, improve handling in corners
- Connected "cupped" lugs for outstanding performance in soft/loose snow



ON-TRAIL: RIPSAW TRACK

- The aggressive side bite for better cornering, the standard in performance trail tracks
- Available in 120", 121", 128" and 136" lengths
- A high-performance trail track with highly aggressive angled profiles
- Outstanding forward and lateral bite
- Superior handling and acceleration in a wide variety of conditions



ICE ATTACK XT STUDDED TRACK NEW

	RECOMMENDED STUD LENGTH
2880359	120" x 1.22", 2.86" pitch 121/136
2880360	137" x 1.22", 2.86" pitch 121/136
2880472	144" x 1.22", 2.52" pitch 121/136

YOUTH 120 68" TRACKS 2.86" PITCH

5411751	68" x 10" x .72" Tri-Star
---------	---------------------------

120" TRACKS 2.86" PITCH

	RECOMMENDED STUD LENGTH
2877748	120" x 1.352" Cobra 1.325/1.450
2877747	120" x 1.5" RipSaw 1.575

121" TRACKS 2.52" PITCH

	RECOMMENDED STUD LENGTH
5412281	121" x 15" x .91" Shockwave 1.075
5413198	121" x 15" x 1" HackSaw 1.075
2875512	121" x 15" x 1.25" RipSaw 1.325
2877377	121" x 15" x 1.352" Cobra 1.325/1.450
5413384	121" x 15" x 1.5" RipSaw 1.575
5412570	121" x 14" x 1.75" SNO-X N/A
5413403	121" x 14.75" x 1.75", SNO-XT Full Clipped* N/A

*Race Only

136" TRACKS 2.52" PITCH

	RECOMMENDED STUD LENGTH
5413318	136" x 15" x 1" HackSaw 1.075
2875639	136" x 15" x 1.25" RipSaw 1.325
2877378	136" x 15" x 1.352" Cobra 1.325/1.450
5413543	136" x 15" x 1.5" RipSaw 1.575
2877246	136" x 15" x 1.75" N/A
2877209	136" x 15" x 2" N/A

144" TRACKS 2.52" PITCH

	RECOMMENDED STUD LENGTH
5414013	144" x 1.352" Cobra 1.325/1.45"
5413073	144" X 2" Series 4—LW N/A

146" TRACKS 2.25" PITCH

	RECOMMENDED STUD LENGTH
2877388	146" x 15" x 1.352" Cobra
2877305	146" x 15" x 2.4" Series 5.1

151" TRACKS 2.25" PITCH

	RECOMMENDED STUD LENGTH
5412886	151" x 15" x 2.0 Series 4.1

155" TRACKS 2.86" PITCH

	RECOMMENDED STUD LENGTH
2877304	155" x 2.1" Comp Track N/A

163" TRACKS 2.86" PITCH

	RECOMMENDED STUD LENGTH
5413621	163" x 2.4" Series 5.1 N/A



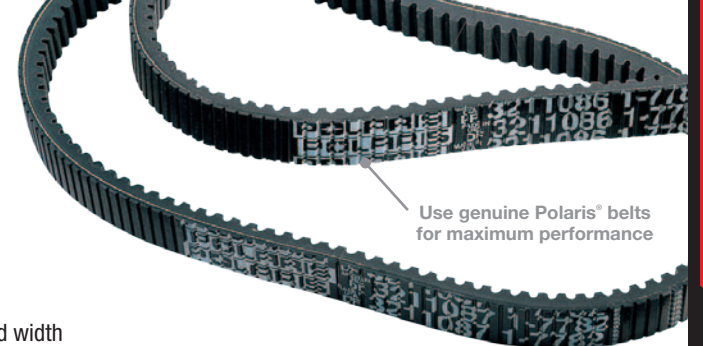
DOWNLOAD OUR FREE
POLARIS® SNOW APPAREL &
ACCESSORIES CATALOG APP

Browse the latest apparel,
accessories, videos and links

BELTS

POLARIS® SNOWMOBILE DRIVE BELTS

- Polaris Engineered™, for Polaris® machines
- Lowest tolerances (0.188") provide the most consistent performance
- Precision measured to ensure stringent tolerances are met for both length and width



STANDARD | GOOD

- Good trail belt for lower horsepower engines
- Best suited for low-speed operation

CVT | BETTER

- Increased service life over Standard belts
- May need 1-2g heavier drive clutch weight over Standard belts

KEVLAR® | BEST

- Increased service life over CVT belts by up to 8 times
- Cut edges belt; consistent like PBO belts
- Short break-in period
- May need 1-2g heavier drive clutch weight over CVT belts

PBO | ULTIMATE

- Extreme-duty belt; longest service life
- CNC ground edges on each belt
- Longer break-in period

Part No.	Belt Width*	Center to Center*	Outer Circumference*	Belt Compound and Construction Notes
AXYS™ Rush®, Switchback® and Adventure				
3211177 (800cc)	1.46" (37.10 mm)	10.62"	45.16"	PBO—double cog, cut finish
3211166 (600cc)	1.46" (37.10 mm)	10.62"	45.16"	PBO—double cog, cut finish
PRO-RIDE® (Rush®, Switchback®, Indy and RMK®, Edge, 2-Stroke IQ® and IQ® RMK® Chassis)				
3211078	1.43" (36.53 mm)	11.50"	46.62"	Standard—double cog
3211080	1.43" (36.53 mm)	11.50"	46.62"	CVT compound version of 3211078
3211086	1.43" (36.53 mm)	11.50"	46.50"	Standard—close tolerance version of 3211078
3211122	1.46" (37.10 mm)	11.50"	46.77"	Kevlar®—double cog, cut finish
3211115	1.46" (37.10 mm)	11.50"	46.77"	PBO—double cog, cut finish
550 Indy®, LXT 550, Voyageur (CVTech Clutch)				
3211154	1.29" (32.70 mm)	10.62"	42.48	Standard—Single cog, cut finish
FS®/FST®				
3211121	1.46" (37.10 mm)	11.00"	45.79"	Kevlar®—double cog, cut finish
340 Indy® Lite Chassis				
3211058	1.250" (31.75 mm)	11.00"	43.31"	Standard—P-90 System
3211059	1.250" (31.75 mm)	12"	45.21"	Standard—P-90 System
Standard Indy® Chassis (Non PRO-RIDE®)				
3211042	1.375" (34.93 mm)	12.00"	47.25"	Standard—P-85 System
3211045	1.375" (34.93 mm)	12.00"	47.12"	Standard—close tolerance version of 3211042
Storm and Big Block Domestic Sleds, Indy® and Gen II				
3211127	1.438" (36.53 mm)	12.50"	48.37"	Standard—double cog version of 3211065
3211065	1.438" (36.53 mm)	12.50"	48.37"	CVT double cog
Evolved Chassis, Indy® XCR 440, Indy® XCF				
3211070	1.375" (34.93 mm)	12.00"	47.25"	Standard—P-85 System
3211067	1.375" (34.93 mm)	12.00"	47.25"	Standard—double cog version of 3211070
3211066	1.375" (34.93 mm)	12.00"	47.25"	CVT double cog version of 3211070
Most 1999 and Newer Gen II (Except Domestic Big Block)				
3211074	1.438" (36.53 mm)	12.00"	47.62"	Standard—double cog
3211075	1.438" (36.53 mm)	12.00"	47.62"	CVT version of 3211074
IQ® Race Chassis				
3211104	1.438" (36.53 mm)	10.625"	44.87"	CVT double cog
3211114	1.438" (36.53 mm)	10.625"	45.20"	PBO—double cog, ground/sanded finish
Most 1999 and Newer Gen II (Except Domestic Big Block)				
Widetrak FS				
3211127	1.46" (37.10 mm)	12.50"	48.5"	Kevlar®—double cog, cut finish
Widetrak IQ				
3211132	1.46" (37.10 mm)	12.00"	47.52"	Kevlar®—double cog, cut finish
Widetrak LX	1.375" (34.93 mm)	12.00"	47.25"	Standard—P-85 System

*Belt dimensions are given in nominal dimensions. There is a +/- variance for all critical dimensions. Clutch setup must be inspected when a new belt is installed and should be adjusted if necessary. The drive belt is an important component in the CVT system. In order to achieve maximum efficiency from the converter, drive belt deflection (tension), clutch offset and alignment must be adjusted properly. See your Service Manual for further details on drive belt measurement inspection.

COVERS

KEEPING MY SLED COVERED WHEN I'M NOT RIDING IS KEY TO MAKING IT LAST. AS HARD AS I PUSH IT ON TRAIL, POLARIS® COVERS GIVE THE PROTECTION MY MACHINE NEEDS.



3/4 POLYESTER COVERS	2015
AXYS™ RUSH®	2880431
AXYS™ Switchback®	2880431
AXYS™ Adventure	2880431

POLYESTER COVERS	2015	2014	2013	2012	2011	2010
PRO-RIDE® RMK® / Switchback® Assault	2879792	2879792	2879792	2879792	2879792	—
PRO-RIDE® /AXYS™ RUSH®	—	2879793	2879793	2879793	2879793	2879793
PRO-RIDE® /AXYS™ Switchback® / Indy® 121	—	2879794	2879794	2879794	—	—
PRO-RIDE® / AXYS™ Switchback® with Rack / Adventure	2880367	2879791	2879791	—	—	—

CANVAS COVERS	2015	2014	2013	2012	2011	2010
PRO-RIDE® RMK®	2878724	2878724	2878724	2878724	2878724	—
IQ® RMK®	—	—	—	—	2876003	2876003*
PRO-RIDE® / AXYS™ RUSH®	2880364	2878728	2878728	2878728	2878728	2878728
Switchback® Assault 144	2878724	2878724	2878724	2878724	2878724	—
Indy® 121	2878725	2878725	2878725	2878725	—	—
PRO-RIDE® / AXYS™ Switchback®	2880365	2878725	2878725	2878725	—	—
PRO-RIDE® / AXYS™ Switchback® with Rack/Adventure	2880366	2878726	2878726	—	—	—
Indy 144 / Voyageur 144	2879845	2879845	—	—	—	—
550 Adventure 144 and 155	2879844	2879844	—	—	—	—
Indy® 550 LXT 144	2879896	2879896	—	—	—	—
IQ® Trail Luxury / Touring	2878727	2878727	2878727	2878727	2878727	2878727
Widetrak / Utility	2877188	2877188	2877188	2877188	2877188	2877188
IQ® Performance 121-128	—	—	2875865	2875865	2875865	2875865*
Indy® Voyageur 144/155 with 2-Up Seat	2880515	—	—	—	—	—
Voyageur 155	2880516	—	—	—	—	—

* Limited Availablit

3/4 POLYESTER COVERS

Protect your Polaris® snowmobile with a Premium 3/4 Cover. This durable cover protects the sled from the elements to keep it looking good and performing at its best. The cover is ideal for overnight protection, when the sled is stored between rides and during trailering.

COLOR: Black

MATERIAL: Durable black canvas construction

ATTACHMENT: Designed to fit over all windshield styles and all accessories such as hand guards, mirrors, etc.

ADDITIONAL FEATURES: For use outdoors overnight, during garage storage, and while trailering; Polaris branded

2880431 | **NEW** Premium 3/4 Cover | AXYS™ Platform



PREMIUM POLYESTER COVERS

These durable polyester Covers provide excellent protection during storage and trailering. The cover has an opening for fuel fill access, and it accommodates a tunnel bag without removal, as well as an accessory front bumper, rear hitch, full range of windshield heights and saddlebags, and the Lock & Ride® Convertible Passenger Seat.

COLOR/GRAPHICS: Black cover with multi-color Polaris® branding

MATERIAL: Durable, premium polyester construction; treated to repel water and prevent UV degradation

Includes integrated straps and hardware for secure installation

2880367 | **NEW** Premium AXYS™ Switchback® Adventure Poly Cover

2879792 | Premium RMK® Poly Cover

2879793 | Premium RUSH® Poly Cover

2879791 | Premium Switchback® Adventure™ Poly Cover

2879794 | Premium Switchback®/Indy® Poly Cover



CANVAS COVERS

These durable Canvas Covers provide outstanding protection for your favorite sled when it's being towed, parked overnight or stored in the off-season.

FITMENT: Custom fit for Polaris® snowmobiles, excellent coverage of spindles and a-arms, adjustable strap to accommodate windshield heights

MATERIAL: Rugged, durable 10 oz. canvas, treated to repel water and prevent UV degradation

ADDITIONAL FEATURES: Elastic at bottom holds cover on sled

2880364 | **NEW** Canvas AXYS™ RUSH® Cover

2880365 | **NEW** Canvas AXYS™ Switchback® Cover

2880366 | **NEW** Canvas AXYS™ Switchback® Adventure™ Cover

2878725 | PRO-RIDE® Switchback®, Indy® 600 Cover

2878724 | PRO-RIDE® RMK®, Switchback® Assault® Cover

2878726 | PRO-RIDE® Switchback® Adventure™ Cover

2878728 | PRO-RIDE® RUSH® Cover

2878727 | IQ® Touring, LXT Cover

2877188 | Widetrak, Utility Cover

2875865 | '07-14 IQ® 121", 121", and 128" Cover

2879844 | Voyageur 550, Adventure X2 Cover

2879845 | Voyageur 144" Cover

2879896 | Indy® LXT Cover

2871913 | 4 Straps and Buckles



DOWNLOAD OUR FREE
POLARIS® SNOW APPAREL &
ACCESSORIES CATALOG APP

Browse the latest apparel,
accessories, videos and links

OILS & LUBES

WHEN IT COMES TO MAINTAINING TOP PERFORMANCE OUT OF MY POLARIS® SNOWMOBILE, THERE IS NO BETTER CHOICE THAN POLARIS ENGINEERED™ LUBRICANTS.

LUBRICANTS ENGINEERED BY POLARIS®, FOR POLARIS®

Polaris Engineered™ Lubricants are designed to meet the technology needs and demands of today's high performance Polaris® engines. Polaris® VES and VES Race are the only oils specifically engineered, tested, and approved for Polaris® variable exhaust snowmobiles.

Why trust anything else?

- Polaris® Engineering approved for maximum engine protection
- Formulated for easy starting in extreme cold conditions
- Provides enhanced valve cleanliness, low smoke and excellent lubricity
- Designed for Variable Exhaust Systems and all other Polaris® 2-cycle engines

EASY START **ENHANCED COLD PULL STARTING**
Formulated to provide better starting performance in all conditions — including extreme cold temperatures.

VES RACING & VES 65% EASIER TO COLD PULL START
(measured in lbs. of Pull Force)

PRODUCT FEATURES	VES RACE	VES	PREMIUM BLUE
FULL SYNTHETIC FORMULA	✓	✓	—
EASY START IN EXTREME COLD	BEST	BETTER	GOOD
EXTREME WEAR PROTECTION	BEST	BETTER	GOOD



VES RACE SYNTHETIC 2-CYCLE OIL

- Designed to optimize the performance of VES systems
- The best engine and exhaust valve detergency available
- Additional anti-wear additive extends ring, cylinder and bearing life
- Pre-mix or injection
- The oil exclusively used by the factory racing team

2878243 | 1 Quart | 6 per case
2878191 | 1 Gallon | 4 per case
2878244 | 16 Gallon Drum
2878245 | 55 Gallon Drum
2878534 | 330 Gallon Tote



PREMIUM BLUE 2-CYCLE OIL

- Excellent low temperature performance
- Most advanced synthetic blend 2-cycle lubricant on the market
- Excellent long-term engine protection and detergency
- Pre-mix or injection

2875035 | 1 Quart | 12 per case
2875036 | 1 Gallon | 6 per case
2875038 | 2.5 Gallon | 2 per case
2875037 | 16 Gallon Drum
2875039 | 55 Gallon Drum
2875040 | 330 Gallon Tote



PS-4 SYNTHETIC OIL

- Full synthetic designed for Polaris® 4-stroke engines
- Excellent cold weather start-ability plus ultimate engine protection in severe operating conditions

2876244 | 1 Quart | 12 per case
2877490 | 2 Quart | 8 per case
2876245 | 1 Gallon | 4 per case
2876247 | 16 Gallon Drum
2876246 | 55 Gallon Drum
2878814 | 330 Gallon Tote



VES SYNTHETIC 2-CYCLE OIL

- Best low temp performance of all Polaris® oils
- Cleaner burning, low odor, smokeless oil formula
- Designed to improve exhaust valve performance
- Offers maximum engine protection at high RPM
- Meets Category IV low temperature requirements
- Pre-mix or injection

2877882 | 1 Quart | 6 per case
2877953 | 2 Quart | 8 per case
2877883 | 1 Gallon | 4 per case
2877884 | 2.5 Gallon | 2 per case
2877885 | 16 Gallon Drum
2877886 | 55 Gallon Drum
2877892 | 330 Gallon Tote



ANTI-FREEZE

- Formulated specifically for Polaris® snowmobile and ORV aluminum cooling systems
- 60/40 pre-mix with deionized water, effective to -62° F

2871534 | Quart | 12 per case
2871323 | Gallon | 6 per case
2872278 | 55 Gallon Drum



GAS SHOCK OILS

- Premium formulas to match every shock
- Eliminate fade and freeze-up

2874522 | Walker Evans™ 5 wt. | Quart | 6 per case
2870995 | Gas Shock Oil | Quart | 6 per case
2872279 | Gas Shock Oil | 2.5 Gallon | 2 per case



ALL SEASON GREASE

- Engineered for the pressure and temperature demands of snowmobiles, ATV and watercraft

2871322 | 3 oz. | 4 packs, 6 per case
2871423 | 14 oz. | 10 per case

GREASE GUN KIT (NOT SHOWN)

- Tough steel construction and pistol grip design
- Front and top-pipe outlet mounts accept both 6" rigid pipe nozzle and 12" 12,000 psi flex hose
- Comes with standard zerk fitting

2871312 | Grease Gun Kit | 4 per case



SYNTHETIC CHAINCASE LUBE

- Prevents rust, oxidation and corrosion of internal chaincase components
- Synthetic formula engineered and tested by Polaris® for snowmobile chains and sprockets
- Provides maximum protection for extreme operating temperatures
- Low sulfur additive resists thermal breakdown

2873105 | Quart | 12 per case
2873106 | Gallon | 4 per case
2872952 | 2.5 Gallon | 2 per case



FOGGING OIL (NOT SHOWN)

- Outstanding moisture displacement and water resistance
- For all 2 and 4 cycle applications
- Excellent rust preventative

2870791 | 12 oz. Aerosol Can | 12 per case

SHOCK ADJUSTING LUBE (NOT SHOWN)

- Allows for easy spring adjustment
- Silicone dry film lubricant
- Penetrates shock body threads and lubricates spanner nut and threads maintaining adjustability in extreme cold

2878018 | Shock Adjusting Lubricant | 1 per case

HYDRAULIC BRAKE FLUID

- Designed for use in Polaris® hydraulic brakes
- Superior high temperature characteristics
- Anti-corrosive additives extend the life of brake system and ensure consistent, positive braking

2872189 | DOT 4 12 oz. | 12 per case

VP RACING FUELS

110 AND 114+ OCTANE RACING FUEL (NOT SHOWN)

- Developed with VP Race Fuels and tested by the Polaris® Factory Race Team to meet the demands of high-horsepower stock and modified racing engines
- Legal-stock fuel for most race sanctions; dilute to meet specific octane requirements
- Maximum horsepower potential
- Consistent blend, excellent shelf life

2880305 | 110 Octane 5 Gallon Pail
2880304 | 110 Octane 54 Gallon Drum
2880307 | 114+ Octane 5 Gallon Pail
2880306 | 114+ Octane 54 Gallon Drum

PROTECT YOUR ENGINE FROM THE DAMAGES OF ETHANOL AND GASOLINE

- Formulated specifically for E10 gasoline
- Designed to address the negative aspects of phase separation common in all ethanol blended gasoline
- Complete fuel system treatment and cleaner
- Keeps ethanol blended fuel stable longer during extended non-use or storage



CARBON CLEAN FUEL TREATMENT

- Dissolves gum and varnish in fuel system
- Prevents and cleans carbon in combustion chamber
- Excellent fuel stabilizer for storage
- Formulated for both 2 and 4-cycle engines
- Absorbs water and stabilizes fuel

2871326 | 12 oz. | 12 per case



PREMIUM ETHANOL FUEL STABILIZER

- Prevents fuel oxidation and system corrosion
- Significantly reduces gum and varnish formation
- Protects fuel system components
- Formulated for both 2 and 4-cycle engines

2870652 | Quart | 12 per case
2872280 | 2.5 Gallon | 2 per case



In addition to a full line of parts and apparel, Polaris® offers a complete line of financing and warranty options. See your dealer for more info.



StarCard® Financing—Most convenient and quickest way to get a unit financed today!



GE Capital

Financing options for purchases of new and used Polaris® products.



Financing options for purchases of new Polaris® products.



POLARIS® PROTECTION PLAN

Polaris® Protection is the only extended mechanical breakdown coverage backed by Polaris®.

TERRAINDOMINATION.COM

MY15 SNW APPRL ACCESS CTLG-INT



INT | 9939822

BUILDMYSLED.COM | POLARIS.COM
COUNTRY OF ORIGIN: INT

All riders pictured are professionals on a closed course. Polaris® recommends that all riders take a training course. Do not attempt maneuvers beyond your capability. Always wear a helmet and other safety apparel. Never drink and ride. Snowmobiles depicted in this brochure may feature Polaris Engineered™ Parts and Accessories that are not standard features of the base model snowmobile they accompany. All performance and/or feature and benefit claims are based upon competitive data available at time of printing. For your nearest dealer, call 1-800-POLARIS or go to terrainomination.com.

Printed in the United States.

Polaris Industries LTD. 50 Prairie Way, Winnipeg, Manitoba Canada R2J 3J8 (204) 925-7100 Fax (204) 925-7110
Polaris Sales Inc., 2100 Hwy. 55, Medina, MN 55340 (763) 542-0500 Fax (763) 542-0599



Unless noted, trademarks are the property of Polaris® Industries Inc. 3M® Reflective Material, Scotchlite and Thinsulate® are registered trademarks of 3M Corporation. 509® is a registered trademark of 509, Inc. AMARA® is a registered trademark of Kuraray Co., Ltd. AP-360® is a registered trademark of Stars Design Group, Inc. Lycra® and ThermoLite® are registered trademarks of INVISTA North America S.A.R.L. DuPont® and Kevlar® are trademarks or registered trademarks of E. I. du Pont de Nemours and Company. Pro-Taper® is a registered trademark of Lacy Distribution, Inc. QWICK-DRY® is a registered trademark of Innovative Fashion Group Corp. Fly F2® is a registered trademark of Western Power Sports, Inc. FOX® is a registered trademark of FOX Racing Shox. GORE-TEX® is a registered trademark of W. L. Gore & Associates, Inc. iPod® is a registered trademark of Apple Computers, Inc. OGIO® is a registered trademark of Ogio International, Inc. Snobunje® is a registered trademark of Snobunje, Inc. Rox® is a registered trademark of Rox Speed FX Inc. Taslan® is a registered trademark of Heberlein Maschinenfabrik AG. Snell® is a registered trademark of Snell Memorial Foundation, Inc. Tekvest® is a registered trademark of Tekrider. Thermore® is a registered trademark of Fisi Fibre Sintetiche S.p.A. Tuflok® is a registered trademark of Illinois Tool Works Inc. Velcro® is a registered trademark of Velcro Industries B.V. Walker Evans® shocks is a registered trademark of Walker Evans Enterprises Corp. Woody's®, Gold Digger® and Traction Master® are registered trademarks of International Engineering and Manufacturing, Inc. Vision® and YKK® are registered trademarks of YKK Corporation. All worldwide rights reserved. Other trademarks used in this catalog owned by their respective owners. Prices and availabilities are subject to change at any moment. Copyright © 2014 Polaris® Industries, Inc.